

Welcome to Kurri Kurri High School



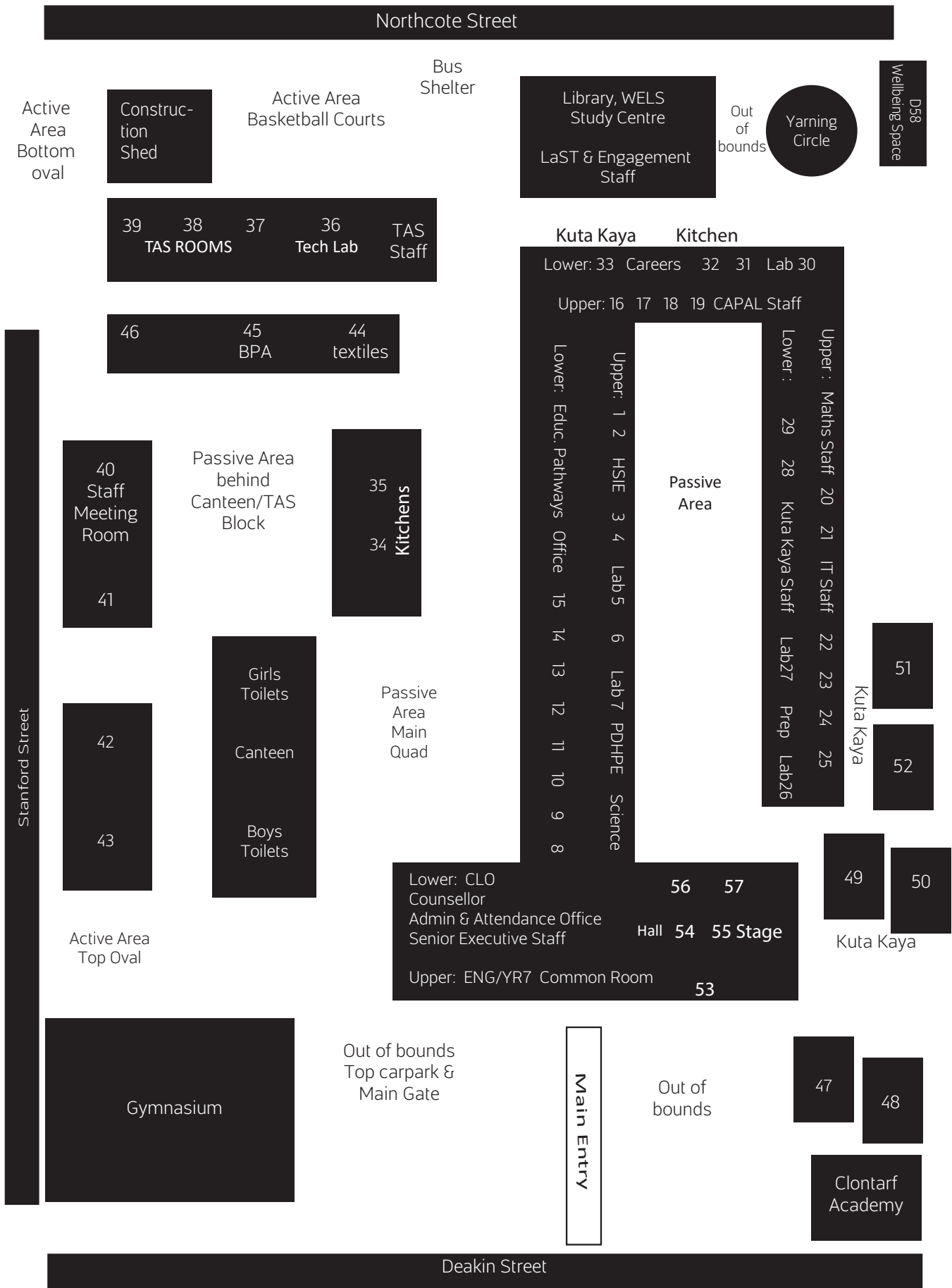
**KURRI KURRI
HIGH SCHOOL**
Creating Futures



Year 7 Orientation Handbook



EXCELLENCE RESPECT SAFETY



EXCELLENCE RESPECT SAFETY

In this booklet you will find:

- School Map
- Welcome to Kurri Kurri High School
- Meet your Year Advisors
- Transition Dates
- Important dates for Year 7 in 2025
- Key Staff Members
- School Uniform
- Starting High School
- Around your new school
- Timetables
- Stationary and Resources
- BYOD and mobile phones
- Kuta Kaya
- Aboriginal Education
- Learning Support
- School Values
- School and Extra Curricular Events
- Staying in touch

Great schools don't just happen, they are built. Here at Kurri Kurri High School we continue to seek ways of knowing and being that shape the entire community to grow and build with each other. The school has been serving this community for over 50 years and have a proud history of providing a quality education for every child in our care, dedicated to developing each individual child for an exciting and successful future.

Our school proudly represents a broad range of cultural backgrounds that contribute to the unique character of Kurri Kurri. Our Aboriginal heritage is acknowledged through our exceptional A&TSI students who offer a strong commitment to embedding culture. Our school is highly regarded for our innovative, well rounded, inclusive programs and accomplishments in student learning. High expectations underpin our work at every level.

With a strong belief of education being a partnership between home and school we value the contribution of our parent and wider community and encourage parent involvement in our programs working alongside our teachers and being actively involved in the life of the school. We have a clear focus of placing our students at the centre of all that we do at KKHS and as a result there are outstanding educational programs and opportunities in place to develop and challenge all our students.

Our staff are a skilled, energetic and committed team with an array of talents and interests that significantly enhance our programs. Our school is distinguished by a commitment to strong student advocacy, wellbeing and incorporating a safe and supportive school environment where all students can thrive, learn and grow, supported by adults and peers. Student voice and choice are the drivers for learning.

Our strong and innovative curriculum modeling with a deep commitment to technology and BYOD (bring your own device) has catapulted KKHS as a highly respected and pioneering place of learning. At KKHS, we work to extend our boundaries beyond the school gate and provide our students with a global skillset in preparation for lifelong learning, the future of work and tertiary study. Each student is offered a personalised pathway to success.

We believe the following values reflect the ethos and culture that we aspire to develop across our community: respect, excellence, and safety.

We welcome you to our school and invite you to be a contributing member of our community.



Alan Hope | Principal

EXCELLENCE RESPECT SAFETY

Meet your Wellbeing Coordinator

Dear Parents and Carers,

I am thrilled to introduce myself as your young person's Year Advisor for 2025. My name is Angela O'Halloran, and I am a Learning and Support Teacher at Kurri Kurri High School. My goal is to support their wellbeing throughout their journey at Kurri Kurri High School.

The role of a Year Advisor involves a variety of roles, all focused on supporting every student. This includes being available during times of need, being easily accessible when they seek guidance, and listening to their ideas to promote personal growth and achievements.

As Year Advisor, I will be your primary point of contact at Kurri Kurri High School for any concerns about your young person's wellbeing. My main responsibility is to actively support each student's emotional development over the next six years. I am dedicated to fostering an environment where everyone can thrive and become their best selves. At Kurri Kurri High School, my goal is to create a safe and supportive atmosphere where each student feels valued. I am committed to helping them develop the skills they need to find and build their own sense of belonging.

At Kurri Kurri High School, we provide a variety of learning opportunities for students to showcase their skills and abilities. We encourage and support each student to learn and grow through sports, the arts, information technology, and classroom activities. Our goal is to nurture and celebrate each individual's unique strengths while providing enriching experiences that foster a genuine love and appreciation for education. We are dedicated to offering the necessary support and guidance to help our students grow, thrive, and become successful individuals who contribute positively to our community.

I look forward to sharing significant events with your young person over the next six years, including Year 7 Camp, Parent Teacher Nights, Merit Assemblies, School Formals, and most importantly, their Year 12 Graduation Assembly. Kurri Kurri High School is dedicated to creating positive teaching and learning environments that foster the development of healthy, happy, successful, and productive members of society.

As Year Advisor, I am thrilled to support you and your young person through this transition, empowering them to become their best selves. I look forward to accompanying them throughout their time at Kurri Kurri High School, ensuring that the positive memories and friendships they create here will have a lasting impact.

Yours Sincerely,



Angela O'Halloran

Transition Dates 2024

Term 2

MONDAY MAY 27

Blue Hub Applications open

TUESDAY JUNE 11

Year 6 Transition and Parent Afternoon

Term 3

MONDAY JULY 22

Blue Hub Applications close

THURSDAY JULY 25

A&TSI Transition

9.30am - 11am

MONDAY AUGUST 5

Blue Hub Interviews

TUESDAY AUGUST 20

Year 5 Transition Day

9.30am - 12.45pm

THURSDAY SEPT 5

Break Thru Transition

10.30am - 11.30am

Term 4

THURSDAY OCTOBER 17

A&TSI Transition

9.30am - 11.00am

TUESDAY NOVEMBER 7

Enrichment Workshop 1

9.30am - 11.45am

TUESDAY NOVEMBER 14

Enrichment Workshop 2

9.30am - 11.45am

THURSDAY NOVEMBER 16

BreakThru Transition

10.30am - 11.30am

TUESDAY NOVEMBER 28

Year 6 Transition Day

9.30am - 12..45pm

TUESDAY NOVEMBER 28

Parent Information Session

4.00pm - 5.30pm

THURSDAY NOVEMBER 30

Break Thru Transition

10.30am - 11.30am

TUESDAY DECEMBER 3

Year 6 Transition Day

9.30am - 12..45pm

TUESDAY DECEMBER 3

Parent Information Session

4.00pm - 5.30pm

EXCELLENCE RESPECT SAFETY

Important Information

ADDRESS Cnr Deakin and Stanford Streets, Kurri Kurri NSW 2327

POSTAL ADDRESS PO Box 71, Kurri Kurri NSW 2327

TELEPHONE 02 4937 1877 or 02 4937 1556

FACSIMILE 02 4937 3773

OFFICE HOURS 8am - 3pm Monday to Friday

EMAIL kurrikurri-h.school@det.nsw.edu.au

WEB SITE www.kurrikurri-h.schools.nsw.gov.au



Kurri Kurri High School

SCHOOL OPAL CARD The school Opal card gives eligible school students free or subsidised travel on public transport between home and school. Please head to <https://www.service.nsw.gov.au/transaction/apply-school-travel-pass> to apply and for further information. Alternatively contact Transport NSW on 131 500



P&G MEETINGS Meetings are held once a term in the front office meeting room. Please refer to the school website for dates and times.

UNIFORM Official school uniforms are available to purchase from Flannagan's, Vincent Street, Cessnock. See Page 8 for details.

Important Dates 2025

Term 1

TUESDAY, FEBRUARY 4	Years 7, 11 and 12 commence
WEDNESDAY, FEBRUARY 5	Years 8, 9 and 10 commence
FRIDAY, MARCH 7	School Photos
DATE TBC	Swimming Carnival
WEDNESDAY, MARCH 12 - MONDAY, 24	NAPLAN
DATE TBC	Meet Your Teachers Event
FRIDAY, APRIL 11	End of Term 1

Term 2

TUESDAY, APRIL 29	Term 2 commences
DATE TBC	Athletics Carnival
DATES TBC	Year 7 Camp - 2 nights (approx. cost \$350)
FRIDAY, JULY 4	End of Term 2

Term 3

TUESDAY, JULY 22	Term 3 commences
FRIDAY, SEPTEMBER 26	End of Term 3

Term 4

MONDAY, OCTOBER 13	Term 4 Commences
WEDNESDAY, DECEMBER 17	End of school year

Please note that as we are only half way through 2024 it is difficult for us to confirm dates for events in 2025. Details will be given as dates are confirmed.

EXCELLENCE RESPECT SAFETY

Key Staff Members 2025

Key contacts for Year 7



Mr Alan Hope
Principal



Ms Toni Wilson
Deputy Principal
Inclusion & Support



Ms Kasey Brady
Deputy Principal
Years 7 & 10



Mrs Angela O'Halloran
Year 7 Advisor



Ms Jane Somerville
Deputy Principal
Years 8 & 11



Mrs Michelle Weir
Head Teacher
Learning & Support



Mr Joshua Brown
Deputy Principal
Years 9 & 12



Ms Sara Da Silva
Head Teacher Engagement

Key Staff Members 2025

Faculty Head Teachers



Miss Samantha Golding
Head Teacher English



Mrs Tracey Gavenlock
Head Teacher PDHPE



Mrs Amy Stewart
Head Teacher HSIE (Rel.)



Miss Lisandra Bailey
Head Teacher CAPA (Rel.)



Mrs Jacqui O'Neill
Head Teacher Maths



Mrs Beth Murray
Head Teacher
Kuta-kaya



Mrs Samantha Ruzicka
Head Teacher Science



Mr Mitchell Hill
Technical Support
Officer



Mr Martyn Skinner
Head Teacher TAS (Rel.)

EXCELLENCE RESPECT SAFETY

School Uniform

The Kurri Kurri High School uniform policy has been overwhelmingly endorsed by staff, students and parents. Students are expected to wear correct school uniform each day.

The wearing of school uniform is supported by our school community because:

- It fosters pride in the school
- It enhances the image and reputation of the school in the eyes of the wider community
- It provides some security for students by clear identification
- It reduces undesirable distinction and competition between students because of clothing.

Junior Boys and Girls

- | | |
|--|--------------|
| • Official junior school polo shirt | \$34.95 |
| • Official school blouse/shirt | \$34.95 |
| • Official school blue tartan/checked skirt. | \$56.95 |
| • Official school navy blue shorts - boys and girls styles available | from \$30 |
| • Official school unisex navy blue track pants | \$29.95 |
| • Navy blue official school hoodie or jacket | from \$39.95 |
| • All weather jackets | \$66* |
| • Bucket Hat | \$10* |
| • Optional - school tie | \$10 |

School Shoes

Students must wear suitable hard covered shoes, with white socks or black stockings. For safety reasons, any low-cut type of shoe, sandals, masseurs, thongs or similar slip-on type footwear or open-toed shoe are not allowed. Students will not be permitted to enter workshop areas such as science laboratories, woodwork/metalwork rooms, kitchens or visual arts classrooms unless they are wearing hard covered shoes. This is a safety issue for all students and in accordance with Department policy.

Hats

The school encourages the wearing of sunhats in the playground.

Where to purchase your uniform

Official school uniforms are available for purchase at:

Flanagan's Menswear, Vincent Street Cessnock Web: <https://flanagans.net.au/school-uniforms/>

* Available from Front Office only



EXCELLENCE RESPECT SAFETY

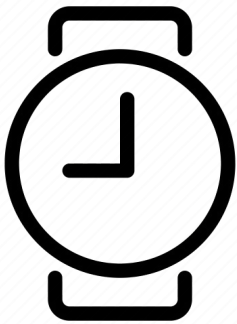
Starting High School @ KKHS

What do I bring?

On Day 1 and 2, students will be participating in activities designed to support your transition to Kurri Kurri High School, therefore you will just need to bring a drink bottle, food, or some money to purchase food from the canteen.

You will not need to bring your device on Day 1.

However, it is **expected that students will bring their devices and all other stationary requirements every day from Day 2.**



What time should I be at school?

School starts at 8.30am, you should aim to be at school by 8.15am so that you have enough time to say goodbye to those who have come to wish you goodluck and get ready to start your first day at high school.



Where do I go?

Year 7 students and their families will assemble in the Gym located at the Deakin Street entrance to be welcomed by the Principal.



EXCELLENCE RESPECT SAFETY

Getting to know your new school

Drop-off and Pick-up

If dropping-off or picking-up your child from school, there are two main access points:

1. Drop zone at the front gate on Deakin Street
2. Side gate access on Stanford Street

Please note that access from Northcote Street is for students coming to and from school by bus.

How will I know what lesson I have?

All students are given access to a copy of the school timetable through Sentral. It will show your lessons, teachers and rooms. Sentral is accessed using your school login/email.

How many lessons will I have each day?

There are four periods each day, each period is 74 minutes long. Year 7 and 8 Sport is held as part of timetabled lessons and Year 9 and 10 Sport is on a Wednesday. A copy of the school bell times is included at the end of this section. The school timetable will be 10 day cycle, comprising of Weeks A and B.

Roll Marking

The school uses an electronic roll marking system where attendance is recorded every lesson. Lateness to class is also recorded in the system.

What if I am late to class?

Lateness to class is not acceptable. Make sure that you are prompt to all of your lessons. If you are delayed by a teacher, ask for a note with a reason for your lateness. Give the note to your next teacher as soon as you get to class.

No student should be out of class without a note from a teacher.

Toilets and Changing Rooms

Student toilets are located off the Main Quad on either side of the Canteen.

Students are provided two lunch breaks in which to use the toilet facilities and organise themselves for the next class.

If you need to use the toilets between periods or during lessons, you will need to get a Toilet Pass from your teacher and use the toilets in A Block downstairs hallway.

A changeroom is located in the Gym for all Lifestyle and PDHPE classes.

Library

Our Library is open daily for research, reading, studying, collaborative learning, quiet board games and Minecraft Club.

Our fiction collection contains a number of books covering a wide range of needs and interests including fantasy, science fiction, Manga, and more. All students are able to come to the library and borrow books with a loan period of 2 weeks (which is able to be extended). The teacher Librarian is also happy to take requests for book purchases.

Study Centre

Kurri Kurri High School also has a dedicated Study Centre. The Study Centre strives to create a learning environment that is nurturing and enables our students to perform to their highest ability. Our aim is to create an inclusive, connected and supported environment to provide students with confidence and knowledge for life success.

The Study Centre is open Monday - Friday 7:00am with flexible closing up to 4.30pm.

Canteen

We are proud to have a Healthy Choice Canteen, selling a variety of hot and cold meals as well as drinks and snacks.

The canteen is open before school and lunch breaks. Both Cash and Eftpos are accepted payment methods. Current menu is available on the school website.

Can I leave my bike at school?

Yes, you can ride your bike or scooter to school and leave it in the bike racks. However, students need to provide their own padlock/chain to secure their bike. No responsibility can be accepted by the school for theft or damage to bikes left in the bike racks.

Getting to know your new school

Attendance

Students must attend school regularly so they can achieve their educational best and increase their career and life options.

Research tells us that for students to succeed at school and beyond, attendance is of utmost importance. KKHS staff work tirelessly to engage students in meaningful learning activities, creating a safe and supportive learning environment where students can Connect, Succeed and Thrive.

Student attendance at KKHS is closely monitored by all staff, who mark rolls for each lesson to ensure students are where they are meant to be. Text messages and emails are sent to parents and carers each day by 11am to notify them of unexplained absences and late arrivals, as an additional support mechanism for our community.

Early Leavers Process

Requests for an Early Leaver Pass must be submitted (Text message, phone call, email) to the Attendance Office between 8am and 10.10am on the day the pass is required.

An Early Leaver Pass Request must include:

- Student Name and Year
- Time and date for Early Leaver Pass
- Parent name and contact
- Reason for pass request
- Name, contact and time of appointment

An Early Leaver Pass will be either provided immediately or made available for pick up at Lunch 1 at the Attendance Office.

Request for an Early Leaver Pass after Lunch 1.

Parent/Guardian is to report to the Front Office and complete a Request for Early Leaver Pass form.

Once the form is completed and approved, the student will be called to the front office at the earliest convenience.

Medication & First Aid

When a medical practitioner has prescribed medication that must be administered during the school day, parents/carers must:

- notify the school
- provide up to date information as required
- supply the medication and any 'consumables' necessary for its administration in a timely way.

Parents/carers of children who require prescribed medication to be administered at school must

complete a written request form from the Front Office. Students must not carry medications unless there is a written agreement between the school and the student's parents/carers.

An Individual health plan is required for any student:

- diagnosed with severe asthma, type 1 diabetes, epilepsy or anaphylaxis
- diagnosed as being at risk of an emergency
- who requires the administration of health care procedures.

Should your child fall sick or require First Aid while at school, they should present to the Front Office. One of the trained staff will assess and provide treatment where possible. If necessary Parents/Carers will be notified and/or additional medical support.

What if I feel sick at school?

Ask your teacher for a note to go to the front office. You may be supervised for a short time, but if your parents are at home, they will generally be asked to come and collect you from school. First aid support at the school is limited.

We do not dispense paracetamol tablets. Parents who require their child to receive prescribed medication during the day should provide the relevant details to the clerical office.

What if I am absent from school?

Students who have been absent from school will need to have their absence explained. This can be done in the following ways:

1. A written note from their parents/guardians, which can be returned to the office, or
2. Use the Kurri Kurri HS Sentral app for smart-phones, or Sentral Parent Portal which will send the response to the school and a confirmation to the parent/guardians email address.

Notes should be presented within five school days or the absence is recorded as being unexplained.

Have your parent/caregiver write a note that gives the following information:

- Student name & Year
- Address & date
- The date of absence
- Reason for absence
- Parent/carer name

EXCELLENCE RESPECT SAFETY

Timetables and Belltimes

At Kurri Kurri High School, our timetable operates on a ten-day cycle made up of Week A and Week B.

Each day is made up of 4 periods. Initially, you will be given a paper copy of your timetable and you will be shown how to read this timetable as well as how it can be accessed on line via the Student Portal.

Lessons start at 8.30am and finish at 2.30pm every day.

There are two 30 minute breaks during the day, we call them Lunch 1 and Lunch 2.

A bell will sound to signal the start of the day, change of period, the start and end of lunch and the end of the day. Prior to the bell a song will play to indicate it's time to move to class/go to the bathroom/fill drink bottles to ensure students are maximising their learning time.



Kurri Kurri High School Bell Times

Period 1	8.30am - 9.44am	74 min
Lunch 1	9.44am - 10.16am	32 min
Period 2	10.16am - 11.30am	74 min
Period 3	11.30am - 12.44pm	74 min
Lunch 2	12.44pm - 1.16pm	32 min
Period 4	1.16pm - 2.30pm	74 min

Stationary and equipment required for Year 7

ITEMS NEEDED FOR SCHOOL FOR SCHOOL EVERYDAY

Laptop and compatible headphones	1 x soft eraser
1 x pencil case	1 x scissors
2 x blue or black pens	1 x glue stick
1 x red pen	2 x whiteboard markers
2 x HB pencils	1 x 30cm ruler
Highlighters	1 x document wallet
1 x pencil sharpener	4 x A4 Exercise books
Casio Scientific Calculator - available from Front Office	Appropriate joggers & water bottle for Lifestyle Prac Lessons

School Contribution

Parents and carers are asked to pay a small general contribution to support the programs offered at Kurri Kurri High School. The general contribution funds are used to purchase resources, offset the cost of printing and library resources. These fees can be paid in person at the front office or online via the payments section on our website. Eftpos is available.



Year 7 Subject	Subject Contribution
ENGLISH, MATHS, SCIENCE, HSIE	NIL
PDHPE	\$15
TAS	\$50
LOTE	\$5
MUSIC	\$20
GENERAL CONTRIBUTION	\$80
	TOTAL FEES \$170
YEAR 7 CAMP	Approx. cost \$350

EXCELLENCE RESPECT SAFETY

BYOD

BYOD is a school policy that enhances digital capacity in students to ready them for the future workplace. Students bring a device to facilitate deeper, more personalised and student-centred learning.

Students are encouraged to bring a device to assist with their learning. All digital devices used in schools are covered by the Student Use of Digital Devices and Online Services policy. Support is available from the ICT staff to assist students in connecting their device to the DET WiFi network, as well as accessing and installing the free software (Microsoft & Adobe programs) available on the DoE Student Portal.

Students and parents/carers must understand that Kurri Kurri High School takes no responsibility for the safety of personal digital devices used under the BYOD program and no action will be taken by school staff to repair or resolve issues with these devices outside of network connection and software installs. When purchasing devices parents/carers may also have the option to purchase an insurance policy from the supplier or relevant insurance company to cover damages or issues that arise.

Device purchasing

To simplify purchasing for parents we have partnered with 2 resellers, Learning with Technology (LWT) and JB HiFi to provide curated options for student laptops. We have recommended several devices across a broad price range that meet all the requirements of a device best suited to use in our classrooms. Purchases can be picked up in store or shipped directly to your home address. For Online Ordering please refer to the links provided in the BYOD section of the school website

(<https://kurrikurri-h.schools.nsw.gov.au/learning-at-our-school/byod.html>).

Existing Devices

The use of existing devices is whole-heartedly encouraged. If students have an existing laptop that they would like to use for our BYOD program that meets the requirements outlined below, then it is suitable for use as a BYOD.

Protective case

A protective case is essential for all student devices. Our school recommends cases with hard protective sides to guard against damage.



EXCELLENCE RESPECT SAFETY

Required Specifications for Bring Your Own Devices

Wireless connectivity:

Wireless 802.11abgn/ac 2.4 or 5GHz.

Operating system:

Our school encourages the use of Windows or Macintosh laptop operating systems. We do NOT recommend the use of Chromebooks or Tablet devices (e.g., iPads) as these devices are not suitable for many projects which require custom software programs.

Software and apps:

No required software - Microsoft & Adobe software is available from the DoE student portal for free, and assistance installing these programs is offered by teachers or ICT Faculty staff at our school.

Battery life:

Minimum 6-hour (8 recommended) battery life.

Storage and RAM:

Minimum 128GB Hard Disk & Minimum 8GB RAM

Hardware features:

Minimum screen size of 11"

Accessories and other considerations:

Sturdy protective case, optional mouse for programs that require more capability than laptop trackpad.

Need more help?

For further information, please contact Mr Mitchell Hill
(Technology Coordinator) - via the school switch or email
mitchell.hill37@det.nsw.edu.au

Mobile phone use expectations



Phones need to go in the YONDR pouch

On entering the school, phones will be sealed in the student's YONDR pouch.

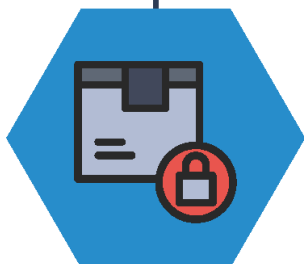
If a mobile phone is sighted by a teacher

Teacher will remind student that their phone is to be in their YONDR pouch.



If the student refuses to put their phone in their YONDR pouch

Non-compliance with expectations will result in the phone being placed in a "lock-box" by a Head Teacher or Deputy Principal to be collected at the end of the school day.



If there is ongoing non-compliance of phone expectations

Parents will be informed and the phone will be placed a "lock-box" for 1 week/5 days.



Repeated "lock-box" occurrences

Deputy Principal intervention and a parent meeting will be conducted.



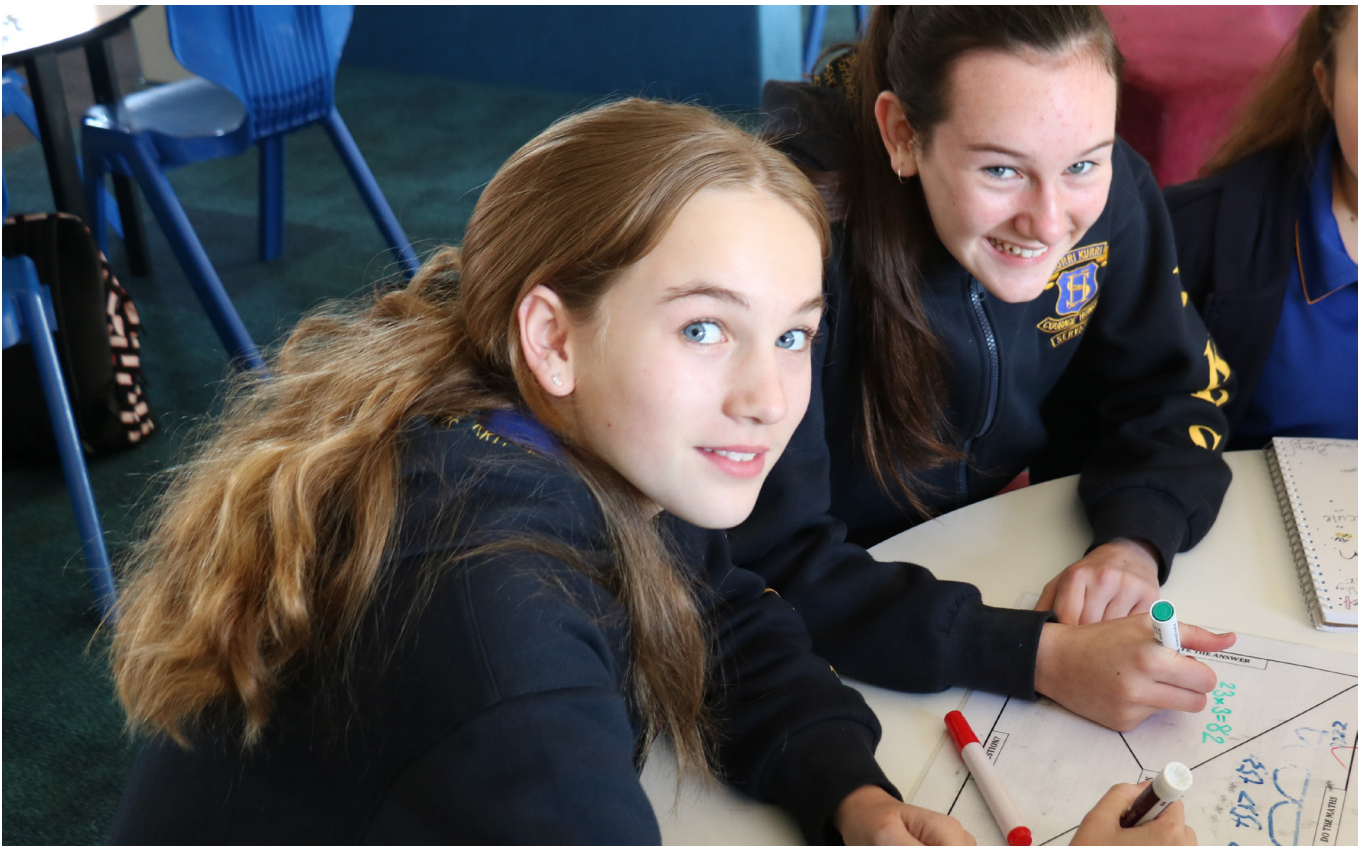
Blue Enrichment Class Applications

The Blue Enrichment Class (BEC) is an opportunity for students to work collaboratively and extend their academic potential. BEC students will work with their teachers to complete similar Rigorous, Engaging, Authentic Learning projects as their peers. However, students in BEC focus on working collaboratively and creatively to make connections in their learning and apply their newly acquired knowledge and skills to real world problem solving. Students will be working with curriculum experts throughout the school to extend their knowledge in key learning areas such as English, HSIE, Science and Mathematics. Students will use these skills to explore key concepts and knowledge in more depth to evaluate and manipulate their learning. Students are identified through a rigorous selection process in Year 6 in line with the High Potential and Gifted Education policy and will be required to present samples of work which demonstrate their academic abilities and their commitment and motivation to learning.

Students are encouraged to approach the BEC learning experience in a mature and independent way, working collaboratively with their peers and alongside their teachers to extend and achieve to their academic potential, and strive for personal excellence. They need to commit to bringing a learning device every day.

To apply:

1. Complete an application
2. Ask your child's Year 6 teacher to submit a recommendation
3. Attend an interview (Monday, August 5)
4. Bring 3 work samples , one being an extended written response
5. Early September successful BEC Applicants notified by mail



EXCELLENCE RESPECT SAFETY

Learning at KKHS in Stage 4



In 2025 students in Stage 4 (Years 7 and 8) will be in subject specific classes. Students will experience a range of subjects throughout the two years including Mathematics, Science, English, HSIE, PDHPE, Technology Mandatory, Wellbeing, Sport, Extra Curricular, and Music and Languages in Year 7 and Visual Art in Year 8. Student learning in these subjects will have a focus on the development of literacy, numeracy, and subject skills to prepare them for the rigours of Stages 5 and 6.

Sport in Year 7

Year 7 students will participate in an integrated Sport program where they will experience a range of team sports and fun movement games. Through the compulsory sports program, students have the opportunity to improve their confidence and self-esteem while building their skills in self-discipline, cooperation, respect, resilience and integrity.

Additionally, physical activity has been demonstrated to have a positive effect on concentration, memory and behaviour.

Kuta-Kaya



The Kuta-kaya Faculty at Kurri Kurri High School has 9 classes that cater for students with a diverse range of needs.

Kuta-kaya is an integral part of our school. Our aim is to provide an excellent educational experience, whilst meeting each student's individual social, health and academic needs.

'Kuta-kaya' means to 'think strong, able and powerful'.

Our classes are named in local Wonnarua language and represent different native Australian animals. Our classes are named - Kawul (Eagle), Marin (Emu), Pikan (Platypus), Kukaparr (Kookaburra), Wallapi (Wallaby), Kirawa (Lizard), Warikal (Dingo), Pintu (Kangaroo) & Wuwing (Magpie).

Kuta-kaya aims to provide a safe, caring and positive learning environment for all by developing authentic experiences for students to develop their social, emotional, communication and academic goals towards greater independence. The Kuta-kaya faculty works in partnership with mainstream teachers, parents, carers, and external organisations to develop holistic and collaborative Individual Education Plans (IEP'S) for our students. Our programs provide students with the opportunity to focus on developing the skills and knowledge to be an inclusive and valuable member of the whole school community. Through Kuta-kaya programs students participate in concrete and hands on activities to solidify their learning.

Our faculty caters for students from Year 7 to Year 12 who access a range of learning pathways. With some students following a Life Skills pathway, some mainstream and some a mix of both. Curriculum pathways are designed on individual student needs. Senior students in Years 10, 11 and 12 are working towards transitioning out of school into further study, employment or post-school options. Many students access personal interest electives, TAFE courses and School to Work programs to support their learning.

All students are included in whole school events and opportunities fostering an inclusive environment. In Stage 4 and 5, students access a range of mainstream lessons and electives to support their interests and skill development. Classes are designed so that students are active community citizens who seek opportunities to be engaged, contribute to society and personal growth towards independence.

Further opportunities are offered such as Community Access, school excursions, work experience and sporting events, allowing students to build upon their numeracy and literacy skills as well as their social, and independence skills. Kuta-kaya provides many well-rounded opportunities both in and out of the classroom with highly specialised educators in a nurturing, and inclusive environment.

EXCELLENCE RESPECT SAFETY

Aboriginal Education

Kurri Kurri High School is proud to have a rich and inclusive culture for our Aboriginal and Non Aboriginal students. Our school has a range of opportunities to support our students social, sporting, cultural, academic and leadership goals.

Our Junior Aboriginal Educational Consultative Group (JAECG) enables our students to have a voice within our school. Our JAECG meet at least twice a term to organise activities and events and show their commitment by volunteering their time to fundraise and run school activities. The JAECG provides leadership opportunities as well as opportunities to represent our school participating in community and interschool events.

Twice a term progress reports are completed for A&TSI students with the aim of promoting and attaining cultural, social and educational goals.

Some of the programs we offer to all Aboriginal and Torres Strait Islander students are:

Young Mob Leadership Program - enabling urban Indigenous youth to gain skills in public speaking and leadership to improve confidence and self-esteem. It also offers opportunities for students to learn more about their Indigenous culture, reinforcing their Aboriginal identity.

SistaSpeak - a girls mentoring group where students learn how to weave, cook and understand about country and why it is so important.

Staff/student mentoring program

CLONTARF ACADEMY

The Clontarf Foundation exists to improve the education, discipline, life skills, self-esteem and employment prospects of young Aboriginal and Torres Strait Islander men and by doing so equips them to participate more meaningfully in society. Clontarf helps young men to attend school, finish Year 12 and enter employment.

DREAM TOGETHER PROGRAM

Dream Together is a program unique to KKHS. It is aimed at building the aspirations of our Aboriginal and Torres Strait Islander girls, immersing them in cultural and educational experiences, empowering them to develop life goals and delivered by facilitators with relevant cultural and life experience as well as a passion and dedication to supporting young women to reach their full potential.



Learning Support

The Learning and Support Team works closely with teachers, students, parents and outsourced professionals to meet the individual learning support needs of our students.

All students in Year 7 will participate in NAPLAN during Term 1.

Learning and support services:

- Assess students learning needs
- Development of individual learning plans
- In-class support
- Transition
- Targeted intervention programs

School Values

Who are the Learning and Wellbeing Team?

The Wellbeing and Engagement Team include:

Deputy Principal:	Ms Toni Wilson
HT Engagement:	Ms Sara Da Silva
HT Learning and Support:	Mrs Michelle Weir
Year Advisors for 2025:	Mrs Angela O'Halloran
Student Support Officer:	Megan Gillespie
District School Counsellors:	Connie Spinks and Sophie Coleman



Kurri Kurri High School is committed to creating a positive learning environment where students have the opportunity to achieve personal excellence. The school is organised for students to pursue their cultural, sporting and personal interests equipping them with the skills to achieve success as lifelong, creative and curious learners.

Kurri Kurri High School has the following school-wide rules and expectations to explicitly teach positive student behaviour. Not only do we promote high expectations of student behaviour within the classroom we also have similar expectations for other areas around the school including our corridors and shared playground areas.

Whole School Approach

The Kurri Kurri High School approach to positive wellbeing is outlined in our strategy to ensure all students are living Kurri WEL. Kurri WEL is a whole school approach to positive social and emotional wellbeing. Through a carefully considered approach, students will be encouraged to Live Wel in all aspects of their education.

This supports students in three main areas; Responding WEL, Being WEL, Connecting WEL and within each of these areas there is a tiered approach:

- **Proactive- Whole School:** These are initiatives that entire year groups or stages participate in.
- **Early Intervention and Targeted:** Education and Learning in small groups: These are small, targeted groups aimed for students to deepen their knowledge and understanding.
- **Individual:** Solo, 1 on 1 targeted sessions; These are individual and targeted interventions to support students.

EXCELLENCE RESPECT SAFETY

School Values

Classroom Norms



Engage in Learning

- * Strive for Personal Best



Show Respect

- * Hands off, Back off
- * Use Respectful Language
- * Respect Other's Property



Wear Correct Uniform

- * KKHS Logo on your Uniform



Right Place, Right Time

- * Every class, Every day



Ready to Learn

- * Laptop
- * Calculator
- * Pen/book
- * Phone in bag
- * Bag at front
- * Hats off

Corridor Norms



Walk to the Left

- * Stay to the left and walkways properly



Two Straight Lines

- * Line up outside your classroom in two lines ready for your teacher
- * Hands off, back off - let people pass



Respect School Environment

- * Respect posters, displays & equipment
- * Respect & don't disturb other classes
- * Right place, right time



Keep Corridor Clear

- * Respect and flush the facilities
- * Respect others privacy
- * Wash your hands
- * DO NOT EAT in the toilets
- * One person per stall



Follow Teacher Instruction

- * Finish your food
- * Get a drink
- * Go to the toilet
- * Move to class

Playground Norms



Hands Off, Back Off

- * Keep your hands to yourself
- * Don't touch other people
- * Engage in safe activities



Respect Your Environment

- * Put rubbish in the bin
- * Use equipment only for what it is meant for
- * When it rains, stay in the outdoor undercover areas



Respect for Others

- * Use positive language
- * Wait in line and use manners at the canteen
- * Follow instructions in bus lines
- * Be respectful of other's property



Use Toilets Appropriately

- * Respect and flush the facilities
- * Respect others privacy
- * Wash your hands
- * DO NOT EAT in the toilets
- * One person per stall



Prepare for Learning - move to class when the music starts

- * Finish your food
- * Get a drink
- * Go to the toilet

Kurri WEL Overview			
Kurri WEL is a whole school approach to positive social and emotional wellbeing. Through a carefully considered approach, students will be encouraged to Live Well in all aspects of their education.			
	Connecting Well	Responding Well	Being Well
Targeted Support and Interventions	The Connecting Well program aims to support students establish positive relationships with their peers both in social, cultural and online environments. The initiatives will enable students to establish, maintain and build upon positive relationships with the aim of creating a positive sense of self and belonging.	The Responding Well initiatives are specially selected programs and initiatives aimed to support students make positive and smart choices. The programs will build upon students' sense of self and support all students to make informed and proactive choices, to enable a positive future.	The Being Well initiatives aim to support students build an emotional resilience toolkit. This aims to enable students to make smart choices, identify strategies and to be resilient, positive and productive individuals.
Whole Year Groups: These are initiatives that entire year groups or stages participate in.	<p>Programs and supports include but are not limited to:</p> <ul style="list-style-type: none"> • Project Rockit • Safe on Social • Dream Together • S.P.O.R.T • The Gathering • Clontarf • Fun Fridays • Bully No Way • Harmony Day • Wear it Purple • RUOK Day • White Ribbon Day • University of Newcastle Showcase • Speed Careering • CYCOS Youth Week 	<p>Programs and supports include but are not limited to:</p> <ul style="list-style-type: none"> • Rock and Water (year 7) • Sticky Stuff • Love Bites • Black Dog Institute • NSW Police presentations 	<p>Programs and supports include but are not limited to:</p> <ul style="list-style-type: none"> • My Strengths • Tomorrow Man • Tomorrow Woman • Pit Stop • Headspace • Smart Choices • Youth Aware Mental Health • Clontarf • Dream Together
Engagement and Learning: These are small, targeted groups aimed for students to deepen their knowledge and understanding	<p>Programs and supports include but are not limited to:</p> <ul style="list-style-type: none"> • Rage • Police Liaison Officer • Drumbeat • Rock and Water • SSO Resilience • Ability Options • FSK: Stage 5 • Hands on Learning 	<p>Programs and supports include but are not limited to:</p> <ul style="list-style-type: none"> • Perfect Presence • Yarn Engage Succeed • Career Preparation • Cool Kids • Rainbow Alliance 	<p>Programs and supports include but are not limited to:</p> <ul style="list-style-type: none"> • Top Blokes • Managing the Bull • YOTS Groups • Journey of Hope • Rainbow Alliance • SSO Groups
Solo: These are individual and targeted interventions to support students.	<p>Programs and supports include but are not limited to:</p> <ul style="list-style-type: none"> • CYCOS • SSO(s) • Year Advisor • TAR 3 Calming Plans • Attendance Improvement Plans 	<p>Programs and supports include but are not limited to:</p> <ul style="list-style-type: none"> • SSO • YA Mediation • TAR 3 Calming Plan 	<p>Programs and supports include but are not limited to:</p> <ul style="list-style-type: none"> • KKCC: Michelle Bailey • Kailyn Gregory • Tracey Chad • KKHS Counsellors • SSO • Year Advisors • Big Picture Advisors • YOTS

School Values

Attendance expectations

Attendance Matters: Did you know?

Parents or carers of children of compulsory school age are responsible for ensuring their child attends school every day. Children must commence school by age 6 and then complete Year 10. After Year 10 and until they turn 17, students must be:

- in school or registered for home schooling or
- in approved education or training (e.g. TAFE, traineeship, apprenticeship) or
- in full-time, paid employment (average 25 hours/week) or
- in a combination of work, education and/or training.

It is important to tell the school if your child has to be absent from school and to provide a reason for the absence.

Principals are legally responsible for keeping accurate records of student attendance. Principals are also responsible for deciding if the reason given for an absence is justified. Wherever possible, parents and carers are encouraged to provide an explanation for absences before the absences occur. This can be done in one of the following ways:

- 1- Phone call or email to the school attendance office stating that your child is absent and a reason why.
- 2- Replying to the automated Text message sent to parents/carers if a student is absent giving a reason in the Text.
- 3- Sending a written note with your child with a reason of absence for the days missed and any medical certificates they may have.

Absentee Notices

If the school has not received an explanation for a child's absence they may send you an Absentee Notice. Principals use the Absentee Notice to contact parents within two days of an unexplained absence. The Absentee Notice must be completed in English and returned to the school within seven school days, giving a reason for the absence.

NSW Department of Education

Why attendance matters

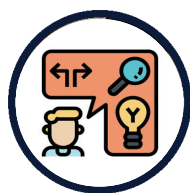
When your child misses school they miss important opportunities to...



Learn



Build friendships



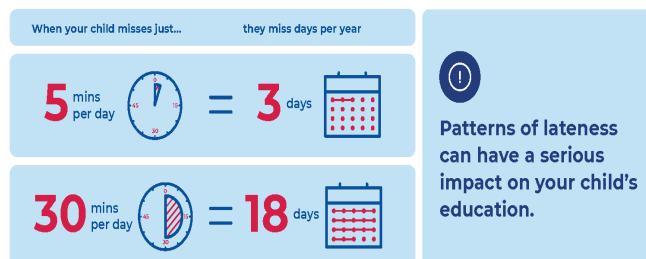
Develop life skills

education.nsw.gov.au



Minutes lost = days lost per year

A couple of minutes here and there doesn't seem like much, but...



School Counsellors

All new students to our school will have a standard meeting with one of our counsellors at the time of enrolment.

Currently at KKHS we have two counsellors:

- Connie Spinks MONDAY, TUESDAY & FRIDAY
- Sophie Coleman WEDNESDAY & THURSDAY

Once started at KKHS, in order to see one of our counsellors, students require a referral, referrals can come from the following ways:

- Students may self-refer, counselling needs are assessed and referrals made if necessary. Referral forms are available from outside the Counsellors office.
- Teachers or non-teaching staff; or
- Referral by the Wellbeing Team

Please be aware that counsellors are mandatory reporters, confidentiality will be respected but is not absolute. Where there is a risk of harm the matter will be reported in the best interests of keeping children safe.

School Life - Representative Sport

Kurri Kurri High School endeavours to create a wide range of sporting opportunities for its students. It aims to promote a healthy lifestyle and the benefits associated with participating in a variety of sporting situations. It is the school's goal to continually assess the range of sporting options available to our students and pursue a broader range of activities, which cater for the interests of the Kurri Kurri community and allow students the opportunity to achieve.

Sports Carnivals

All students are expected to attend and participate in annual Swimming and Athletics carnivals. You are encouraged to wear Sports House colours for these events.

Students are grouped into Houses on surnames of the students.

If your surname falls between:

- A-D** You are in **Allunga House** and should be dressed in Red
- E-K** You are in **Kyeema House** and should be dressed in Green
- L-R** You are in **Lutana House** and should be dressed in White
- S-Z** You are in **Neewarra House** and should be dressed in Blue.

Talented athletes at Kurri Kurri High School are able to proceed to Zone, Hunter Regional, State and National levels through our participation in the Hunter School Sport (HSSA), NSW Combined High Schools Sport (CHS), NSW All Schools and, at national level, the Pacific School Games.

EXCELLENCE RESPECT SAFETY



Our Representative S.P.O.R.T program supports students undertake representative opportunities through Zone, Hunter and State competitions, participate in skill workshops & professional coaching clinics.

Our S.P.O.R.T program represents our commitment to

Strive

Perform

Out do

Represent

Teamwork

Commitment to Sport

Kurri Kurri High School is committed to the following sports:

- Swimming
- Athletics
- Cross Country
- Netball
- Basketball
- Touch Football
- Soccer
- Futsal
- Rugby League

Other sports that may be entered as individual include- Golf, Gymnastics, Lawn bowls.

Please note that the sports offered may differ each year based on student interest and coach availability.

For representative teams other than those mentioned above, students nominate to join training squads and are then chosen for teams according to criteria set down by the coach of that team.

EXCELLENCE RESPECT SAFETY

School Life

Becoming involved with activities and events as part of your time at school can help to expand on learning, develop skills and build confidence. Just some of the things available to you include:

Excursions & Incursions

Throughout your time at Kurri Kurri High School your teachers will arrange experiences to add to your learning and/or develop the friendships and connection within your Year group.

Excursions planned so far for 2024 include:

- Boot Camp
- Project launches
- Year 7 Camp
- Year 7 Sports Gala Days
- Luna Park
- Sydney Musical Performance
- Cultural Infusions
- Overnight CAPA Workshops in Sydney

Student Representative Council (SRC)

Who can join & when do we do we meet?

Any student from any year can be a part of the SRC.

Meeting times vary depending on upcoming events. Be sure to keep an eye on daily notices.

Who are we?

By being in the SRC you allow students to have a voice, develop leadership skills, work with fellow peers, plan fun events, and organise fundraisers around the school.

What do we do?

The SRC plans ways in which to make a difference around our school as well as support causes that are important on a more global basis. We often join forces with the JAECC and interact to have a greater impact.

- Examples are:
- Do it for Daily Day
 - Beansies for Brain Cancer
 - RUCKY Day
 - National Recycling Week

We'd love to hear your ideas.

How can you join?

Joining the SRC is as easy as coming along to one of our meetings and getting involved in making a difference in our school.

See Miss Hardy to find out when we next meet.

Coordinator:
MISS HARDY

Find her in the
SCIENCE
STAFFROOM.

Interact

When do we meet?

Every Week A
Thursday Lunch 2
Room C20

What do we do?

Interact Club brings together young people ages 12-18 to develop leadership skills while discovering the power of Service Above Self.

We organise an activity once per term to support local charities or our school community.

Coordinator:
MEGAN
GILLESPIE.

Find her in the
library/WELs
centre before
school or at
lunch breaks.

We also host Terrific Toasties every Monday and Tuesday mornings.

Junior Aboriginal Education Consultative Group

When do we meet?

Every Friday Period 2
in Room A14

Who are we?

The JAECC is a platform that gives you, as an Aboriginal and/or Torres Strait Islander student, a voice and agency within our school community.

Have your ideas and opinions considered, establish a sense of belonging, positive relationships with your teachers and fellow A&TSI students while acknowledging the diverse and unique cultural identity within the group.

What do we do?

- We give Acknowledgement of Country at school events
- Coordinate and participate in leadership days
- Meet and work with A&TSI students from other schools in our local community
- Give A&TSI a voice within our school
- Create positive legacy projects

Coordinator:
MS LEWIS

Find her in the
CAPA
STAFFROOM

The Junior AECG (JAECG) is a student committee that is established by a Local AECG (LAECG) and functions as an independent subcommittee.

EXCELLENCE RESPECT SAFETY

Special Religious Education

Christian Special Religious Education (SRE) engages students in conversations as they question life, explore values and discover faith. At Kurri Kurri High School, this is an optional program delivered to students who nominate to participate for an hour each week. It is facilitated by volunteers from the Anglican Diocese of Newcastle and are a Department of Education approved SRE provider.

There is a Special Religious Education participation letter as part of your enrolment pack. If you change your mind regarding participation after enrolment, simply notify the school in writing.

Healthy School Canteen

We are proud to provide a Healthy Choice Canteen having been officially audited by Menu Check. The canteen is open school days 8am - 1.30pm. Current menu can be found on the school website.

KKHS CANTEEN MENU / PRICE LIST – 2024

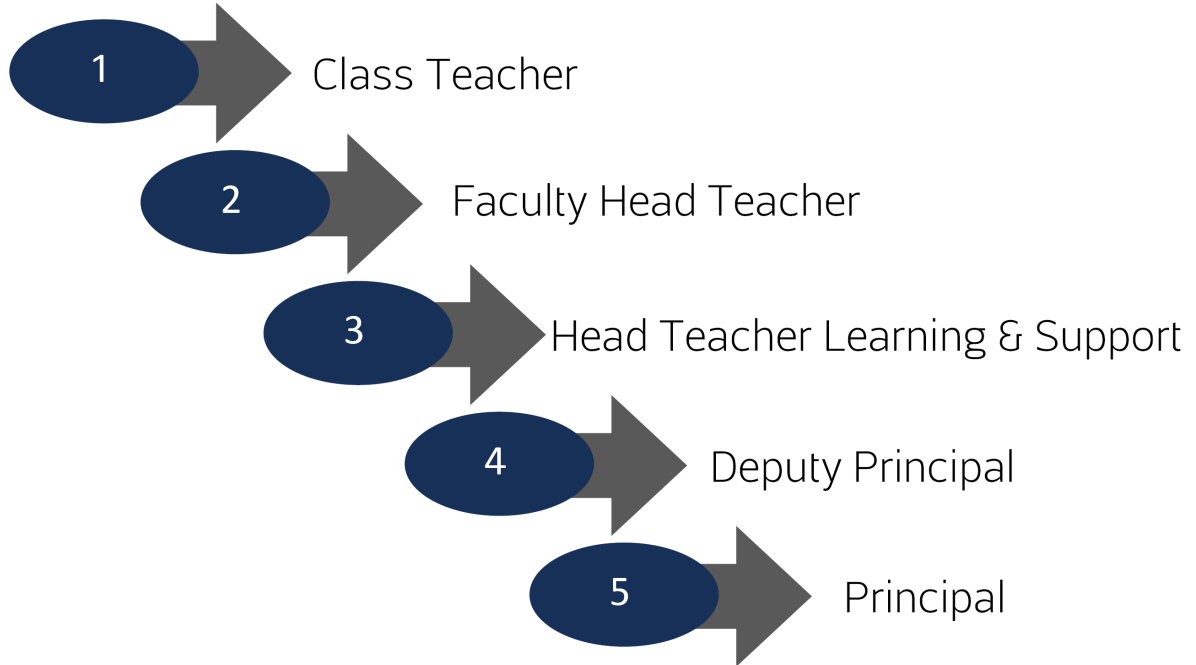
New Canteen operating hours 8.00am to 1.30pm

Every Day Items		Occasional Items	
Salad Roll	\$4.00	Lunch - Monday to Thursday	
Chicken lettuce & mayo roll	\$4.00	Low fat pie	\$3.50
Egg and lettuce roll*	\$4.00	Low fat sausage roll – 120gm	\$3.00
Ham roll	\$4.00	Plain chicken burger	\$4.00
Large salad tub + cheese*	\$7.00	Chicken Roadie	\$4.00
Small salad tub + cheese*	\$4.00	Garlic Bread	\$2.00
Salad Specials - from	\$5.00	Twisted Yogurt	\$2.00
Small salad wrap + cheese*	\$4.50	Low fat Muffin	\$2.50
Large salad wrap + cheese*	\$7.00		
Large salad wrap + meat*	\$7.00	Friday – Lunch 1	
Small salad wrap + meat*	\$4.00	Friday “Pie Day”	
Small rice tub	\$4.50	Various flavoured pies	\$4.00
Small pasta tub	\$5.00	Spinach & Feta Roll -120gm	\$3.50
Fresh fruit tub	\$2.50	Quiche 120grms	\$3.50
Low fat yoghurt	\$3.50		
Cheese & crackers or Vegie sticks	\$2.50	Drinks	
Cheese sandwich*	\$2.00	Coke no sugar	\$2.50
Cheese & vegemite sandwich*	\$2.00	Chill Ice Tea	\$3.00
Cheese & tomato sandwich*	\$2.50		
Salad sandwich*	\$4.50		
Meat & salad sandwich*	\$5.00	Vegetarian, Vegan and Gluten free options are always available.	
Beef burger plain*	\$5.00		
Beef burger with salad*	\$6.50		
Ham & Cheese bun	\$2.50	Specials of the Day	
Chicken Chilli Wrap*	\$7.00	Specials vary and will be determined by popularity, the weather and available fresh produce in season. There is something different available every day.	
		Check what's cooking!	
		From \$5.50	
		Check the canteen notice board for breakfast menu items.	
Drinks			
Water 600ml	\$2.00		
Pump water 750ml	\$3.50		
Juice cup – 2 flavours	\$1.00		
Up n' go – 2 flavours	\$2.50		
Snap Stix	\$1.00		
Frozen Juice Cup	\$1.00		
Waterfords Sparkling	\$2.50		
Small juice – 3 flavours	\$3.00		
Milk – 500ml	\$3.50		
Plain milk	\$2.00		
Small flavoured milk	\$2.50		
		*Wraps, rolls and sandwiches from the everyday menu must be ordered by 12pm	

Who to contact when

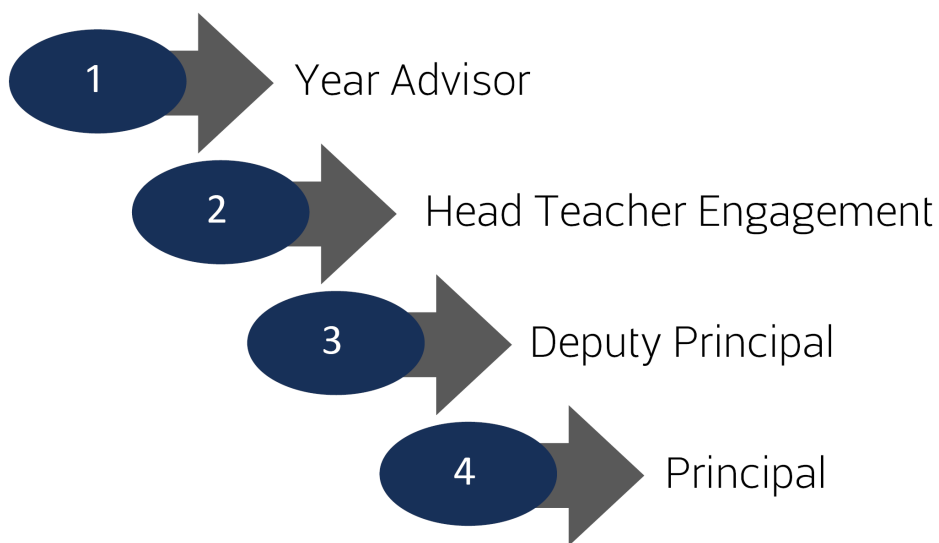
Please follow these pathways to assist you with making the right point of contact:

LEARNING ISSUES



Please follow these pathways to assist you with making the right point of contact:

WELLBEING ISSUES



Keeping in Touch

Keep in touch with what is going on at our school via:

- **School Website** Keeps you up-to-date on school news stories, make payments, copies of the school newsletter, photo galleries as well as a comprehensive information on all facets of our school.
<https://kurrikurri-h.schools.nsw.gov.au>
- **Facebook & Instagram** Like our Facebook and Instagram pages where we post regular announcements to keep you up to speed on what is happening in the school on a day to day basis.
- **Email** Much of our information home is sent via email, please be sure to keep your email up-to-date.
- **School Newsletter** Produced once a term and delivered electronically. Be sure to include your email on the enrolment form to receive a copy.
- **Sentral Parent Portal** Sentral Parent Portal is a secure online platform that provides parents with access to student timetables, School Reports and daily notices from teachers to students.
- **Stay up-to-date** Be sure to let us know if any of your contact details change. Having the correct address, home and email addresses ensures we can get information out to you easily.
Email: kurrikurri-h.school@det.nsw.edu.au or phone 4937 1877
- **P&C** The P&C is an excellent place to have a voice in our school. Meetings are held on the twice a term. Please refer to the website for dates and times.



Is your child starting high school?
We're here to help!

Get ready for high school

Get ready for the first day of Year 7 with our **Getting ready for high school** resources to help your family transition to this new and exciting stage of your child's schooling journey.

What you'll find:

Preparation tips

Useful tips and activities to help your child prepare for Year 7, easing the transition from primary school in the weeks leading up to the start of the term.

Learning at home

Help your child develop and use the literacy and numeracy skills they'll need in all their subjects.

What to expect

Information on assessments, learning, wellbeing support and school routines.

Get in touch

Who to contact for information about your child and the support available in our schools.

Additional support

Learn about the extra learning support and other opportunities available for your child in our schools.



Explore our guide and online resources and ensure your child is ready for a successful start to high school!



Scan the QR code to explore **Getting ready for high school** resources.
edu.nsw.link/starting-high-school



KKHS