

# Welcome to Kurri Kurri High School



**KURRI KURRI  
HIGH SCHOOL**  
Creating Futures



## Year 7 Orientation Handbook



**EXCELLENCE    RESPECT    SAFETY**

## In this booklet you will find:

- Welcome to Kurri Kurri High School
- Meet your Year Advisors
- Transition Dates
- Important dates for Year 7 in 2022
- Key Staff Members
- School Uniform
- Starting High School
- Around your new school
- Timetables
- Stationary and Resources
- BYOD and mobile phones
- HUB Learning
- Kuta Kaya
- Aboriginal Education
- Learning Support
- School Values
- School and Extra Curricular Events
- Staying in touch
- School Map

# Welcome to KKHS



**KURRI KURRI**  
**HIGH SCHOOL**  
Creating Futures

Great schools don't just happen, they are built. Here at Kurri Kurri High School we continue to seek ways of knowing and being that shape the entire community to grow and build with each other. The school has been serving this community for over 50 years and have a proud history of providing a quality education for every child in our care, dedicated to developing each individual child for an exciting and successful future.

Our school proudly represents a broad range of cultural backgrounds that contribute to the unique character of Kurri Kurri. Our Aboriginal heritage is acknowledged through our exceptional A&TSI students who offer a strong commitment to embedding culture. Our school is highly regarded for our innovative, well rounded, inclusive programs and accomplishments in student learning. High expectations underpin our work at every level.

With a strong belief of education being a partnership between home and school we value the contribution of our parent and wider community and encourage parent involvement in our programs working alongside our teachers and being actively involved in the life of the school. We have a clear focus of placing our students at the centre of all that we do at KKHS and as a result there are outstanding educational programs and opportunities in place to develop and challenge all our students.

Our staff are a skilled, energetic and committed team with an array of talents and interests that significantly enhance our programs. Our school is distinguished by a commitment to strong student advocacy, wellbeing and incorporating a safe and supportive school environment where all students can thrive, learn and grow, supported by adults and peers. Student voice and choice are the drivers for learning.

Our strong and innovative curriculum modeling with a deep commitment to technology and BYOD (bring your own device) has catapulted KKHS as a highly respected and pioneering place of learning. At KKHS, we work to extend our boundaries beyond the school gate and provide our students with a global skillset in preparation for lifelong learning, the future of work and tertiary study. Each student is offered a personalised pathway to success.

We believe the following values reflect the ethos and culture that we aspire to develop across our community: respect, excellence, and safety.

We welcome you to our school and invite you to be a contributing member of our community.

Alan Hope | Principal

**EXCELLENCE RESPECT SAFETY** 1

## Meet your Wellbeing Coordinators



**KURRI KURRI**  
**HIGH SCHOOL**  
Creating Futures

Dear Families,

It is with great excitement that we introduce ourselves to you, our names are Peter Asvestas and Scott Berry. Peter Asvestas has just finished being a Wellbeing Coordinator with the current Year 12 and Scott has a wealth of knowledge in the wellbeing of students in previous roles at the school. We have been selected to be your child's Wellbeing Coordinator's in 2022. Our mission is to support your child's wellbeing needs throughout their journey at Kurri Kurri High School.

A Wellbeing Coordinator's role represents many different qualities, some of which includes; supporting your child in time of need, being readily available when your child is seeking advice and listening to their ideas to support their growth and success. We will be your first point of contact at Kurri Kurri High School when you have concerns regarding your child's academic success or wellbeing. Our duty as Wellbeing Coordinators are to actively support your child's emotional development over the next six years to ensure your child can thrive into their best self.

As classroom teachers of the Studio School and Stage 4 faculties, we strive to create a reassuring environment, by providing your child with the skills to seek their own sense of belonging. Here at Kurri Kurri High School we offer multiple learning opportunities for your child to showcase their exclusive skills and abilities. We encourage and support every student to learn and grow through sport, the arts, information technology or within the classroom. Our priority is to get to know each student as an individual so we are able to promote their strengths and provide individualised experiences for them to love and appreciate. Our goal is to ensure we allow the students to grow into successful people in our community.

We look forward to organising and sharing significant events for your child to attend and contribute to over the next 6 years, including; Year 7 Camp, 7-360 conferences, Year 7 Exhibition Evenings, Merit Assemblies, School Formals and most importantly their Year 12 Graduation Assembly. Kurri Kurri High School is committed to creating positive teaching and learning environments that enable the development of healthy, happy, successful and productive citizens of society.

As Wellbeing Coordinators, we look forward to supporting both you and your child, so they have every opportunity to become the best version of themselves. We will be with them every step of their journey, ensuring the positive memories that are made here at Kurri Kurri High School will last a lifetime.

Yours Sincerely,

Peter Asvestas  
2022 Year 7 Wellbeing Coordinator

Scott Berry  
2022 Year 7 Wellbeing Coordinator

## Important Information

**ADDRESS** Cnr Deakin and Stanford Streets, Kurri Kurri NSW 2327

**POSTAL ADDRESS** PO Box 71, Kurri Kurri NSW 2327

**TELEPHONE** 02 4937 1877 or 02 4937 1556

**FACSIMILE** 02 4937 3773

**OFFICE HOURS** 8am - 3pm Monday to Friday

**EMAIL** kurrikurri-h.school@det.nsw.edu.au

**WEB SITE** [www.kurrikurri-h.schools.nsw.gov.au](http://www.kurrikurri-h.schools.nsw.gov.au)



Kurri Kurri High School

**SCHOOL OPAL CARD** The school Opal card gives eligible school students free or subsidised travel on public transport between home and school. Please head to <https://www.service.nsw.gov.au/transaction/apply-school-travel-pass> to apply and for further information. Alternatively contact Transport NSW on 131 500



**P&C MEETINGS** Meetings are held twice a term in the front office meeting room. Please refer to the school website for dates and times.

**UNIFORM SHOP** Official school uniforms are available through the school uniform shop:  
**OPEN Monday-Friday 8am - 9am .**

# Transition Dates 2021

## Term 2

**Tuesday, 1st June** 10am-1pm  
Year 5 Transition

**Thursday, 10th June** 9.30am-1pm  
Year 6 Transition

**Friday, 11th June**  
Blue Hub Applications open

## Term 3

**Thursday, 22nd July** 9.30am - 11am  
A&TSI Student Orientation Activities

**Tuesday, 10th August** 9.30am - 1pm  
High School Orientation All students

**Tuesday, 10th August** 4.30pm - 5.30pm  
Parent Information Evening

**Thursday, 19th August** 9am - 10am  
BreakThru Students Only - Transition activities

**Blue Hub Applications Due** Monday, 30th August

**Thursday, 2nd September** 9am - 10am  
BreakThru Students Only - Transition activities

**Blue Hub Interviews** Mon 6th & Tues 7th September

## Term 4

**Thursday, 14th October** 9.30am - 11am  
A&TSI Student Orientation Activities

**from Monday, 11th October**  
Successful Blue Hub Applicants notified

**Tuesday, 23rd November** 9.30am - 1pm  
Year 6 High School Orientation Day

**Tuesday, 23rd November** 4.30pm - 5.30pm  
Parent Information Afternoon

# Important Dates 2022

## TERM 1

Tuesday, 1st February	Years 7, 11 and 12 commence
Wednesday, 2nd February	Years 8, 9 and 10 commence
Week 3 TBC	School Photos
Date TBC	Swimming Carnival
Date TBC	Meet Your Teachers Event
Friday, 8th April	End of Term 1

## TERM 2

Wednesday, 27th April	Term 2 commences
Date TBC	Athletics Carnival
Tuesday, 10th - Friday, 20th May	NAPLAN
Dates TBC	Year 7 Camp - 2 nights (approx. cost \$350)
Date TBC	Years 7 & 8 360 Conferences
Friday, 1st July	End of Term 2

## TERM 3

Tuesday, 19th July	Term 3 commences
Friday, 23rd September	End of Term 3

## TERM 4

Monday, 10th October	Term 4 Commences
TBC	Years 7 & 8 360 Conferences
Monday, 19th December	End of school year

Please note that as we are only half way through 2021 it is difficult for us to confirm dates for events in 2022. Details will be given as dates are confirmed.

# Key Staff Members 2022

## Key contacts for Year 7



**Mr Alan Hope**  
Principal



**Mr Peter Asvestas**  
Year 7 Advisor



**Mr Scott Berry**  
Year 7 Advisor



**Ms Toni Wilson**  
Deputy Principal (Rel.)  
Years 7 & 10



**Ms Kasey Brady**  
Head Teacher Stage 4



**Ms Jane Somerville**  
Deputy Principal  
Years 8 & 11



**Mrs Michelle Weir**  
Head Teacher  
Learning & Support



**Mrs Joanne St Hill**  
Deputy Principal  
Years 9 & 12



**Ms Sara Da Silva**  
Head Teacher Engagement &  
Girls Advisor



# Key Staff Members 2022

## Faculty Head Teachers



**Mrs Kylie Edwards**  
Head Teacher QUEST



**Mrs Kristy Davies**  
Head Teacher (Rel.)  
Kuta Kaya



**Mrs Jacqui O'Neill**  
Head Teacher STEM  
Maths TAS



**Mr David Buswell**  
Head Teacher  
Studio School



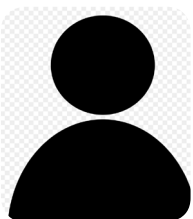
**Mrs Samantha Ruzicka**  
Head Teacher STEM  
Science



**Ms Melinda Taylor**  
Head Teacher  
Admin/Library



**Mrs Tracey Gavenlock**  
Head Teacher Lifestyle



**TBA**  
Head Teacher CAPAL

# School Uniform

The Kurri Kurri High School uniform policy has been overwhelmingly endorsed by staff, students and parents. Students are expected to wear correct school uniform each day.

The wearing of school uniform is supported by our school community because:

- It fosters pride in the school
- It enhances the image and reputation of the school in the eyes of the wider community
- It provides some security for students by clear identification
- It reduces undesirable distinction and competition between students because of clothing.

## Junior Boys and Girls

- |  |      |
|--|------|
| • Official junior school polo shirt                                  | \$27 |
| • Official junior blouse/shirt                                       | \$35 |
| • Official school blue tartan/checked skirt.                         | \$57 |
| • Official school navy blue shorts - boys and girls styles available | \$35 |
| • Official school unisex navy blue track pants                       | \$25 |
| • Navy blue official school hoodie or jacket                         | \$55 |
| • Optional - school tie  | \$20 |

## School Shoes

Students must wear suitable hard covered shoes, with white socks or black stockings. For safety reasons, any low-cut type of shoe, sandals, masseurs, thongs or similar slip-on type footwear or open-toed shoe are not allowed. Students will not be permitted to enter workshop areas such as science laboratories, woodwork/metalwork rooms, kitchens or visual arts classrooms unless they are wearing hard covered shoes. This is a safety issue for all students and in accordance with Department policy.

## Hats

The school encourages the wearing of sunhats in the playground.

## Where to purchase your uniform

Official school uniforms are available through the school uniform shop:

**OPEN Mon-Wed** 8.00am-9.00am **Wed & Thurs** 2.30pm- 3.30pm



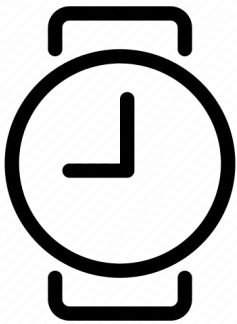
# Starting High School @ KKHS

## What do I bring?

On Day 1 and 2, students will be participating in activities designed to support your transition to Kurri Kurri High School, therefore you will just need to bring a drink bottle, food, or some money to purchase food from the canteen.

You will not need to bring your device on Day 1 and 2.

However, it is **expected that students will bring their devices and all other stationary requirements every day from Day 3.**



## What time should I be at school?

School starts at 8.30am, you should aim to be at school by 8.15am so that you have enough time to say goodbye to those who have come to wish you goodluck and get ready to start your first day at high school.



## Where do I go?

Year 7 students and their families will assemble in the Gym located at the Deakin Street entrance to be welcomed by the Principal, Mr Hope (Deputy Principal), Ms Brady (HT Stage 4), Mr Asvestas and Mr Berry (Year Advisors) and Year 7 teachers.

## What happens in the first few days?

Year 7 students will participate in KKHS Boot Camp for the first 5 weeks of Term 1. Boot Camp is designed to expose Year 7 to how learning looks and feels at Kurri Kurri High School and to provide you with the tools to be successful throughout your high school journey.

The first two days are spent getting to know your teacher and your Hub classmates. You will learn how to navigate your way around the school and participate in Project Launches as an introduction to the projects you will be participating in during Term 1 in Core, Lifestyle, Music and Languages.



# Getting to know your new school

## Drop-off and Pick-up

If dropping-off or picking-up your child from school, there are two main access points:

1. Drop zone at the front gate on Deakin Street
2. Side gate access on Stanford Street

Please note that access from Northcote Street is for students coming to and from school by bus.

## How will I know what lesson I have?

All students are given access to a copy of the school timetable through Sentral. It will show your lessons, teachers and rooms. Sentral is accessed using your school login/email.

## How many lessons will I have each day?

There are three periods each day, each period is 100 minutes long. Year 7 and 8 Sport is held as part of timetabled Lifestyle lessons and Year 9 and 10 Sport is on a Wednesday. A copy of the school bell times is included at the end of this section. The school timetable will be 10 day cycle, comprising of Weeks A and B.

## Roll Marking

The school uses an electronic roll marking system where attendance is recorded every lesson. Lateness to class is also recorded in the system.

## What if I am late to class?

Lateness to class is not acceptable. Make sure that you are prompt to all of your lessons. If you are delayed by a teacher, ask for a note with a reason for your lateness. Give the note to your next teacher as soon as you get to class.

No student should be out of class without a note from a teacher.

## Toilets and Changing Rooms

Student toilets are located off the Main Quad on either side of the Canteen.

Students are provided two lunch breaks in which to use the toilet facilities and organise themselves for the next class.

If you need to use the toilets between periods or during lessons, you will need to get a Toilet Pass from your teacher and use the toilets in A Block downstairs hallway.

A changeroom is located in the Gym for all Lifestyle and PDHPE classes.

## Library

Our Library is open every school day: 8.10am - 8.30am. We are open both lunch breaks for research, reading, studying, collaborative learning, quiet board games and Minecraft Club.

Our fiction collection has expanded to meet student needs and interests with a broad range of fiction, fantasy and science fiction and Manga. There are also dedicated sections for War, Humour, Action, Sport, Crime fiction and more. The teacher Librarian is also happy to take requests for book purchases.

## Study Centre

Kurri Kurri High School also has a dedicated Study Centre. The Study Centre strives to create a learning environment that is nurturing and enables our students to perform to their highest ability. Our aim is to create an inclusive, connected and supported environment to provide students with confidence and knowledge for life success.

The Study Centre is open Monday - Friday 7:00am with flexible closing up to 4.30pm.

## Canteen

We are proud to have a Healthy Choice Canteen, selling a variety of hot and cold meals as well as drinks and snacks.

The canteen is open before school and lunch breaks. Both Cash and Eftpos are accepted payment methods. Current menu is available on the school website.

## Can I leave my bike at school?

Yes, you can ride your bike or scooter to school and leave it in the bike racks. However, students need to provide their own padlock/chain to secure their bike. No responsibility can be accepted by the school for theft or damage to bikes left in the bike racks.

# Getting to know your new school

## Attendance

Students must attend school regularly so they can achieve their educational best and increase their career and life options.

Research tells us that for students to succeed at school and beyond, attendance is of utmost importance. KKHS staff work tirelessly to engage students in meaningful learning activities, creating a safe and supportive learning environment where students can Connect, Succeed and Thrive.

Student attendance at KKHS is closely monitored by all staff, who mark rolls for each lesson to ensure students are where they are meant to be. Text messages and emails are sent to parents and carers each day by 11am to notify them of unexplained absences and late arrivals, as an additional support mechanism for our community.

## Early Leavers Process

Request for Early Leaver Pass must be submitted (Text message, phone call, email) to the Attendance Office between 8am and 10.10am on the day the pass is required.

An Early Leaver Pass Request must include:

- Student Name and Year
- Time and date for Early Leaver Pass
- Parent name and contact
- Reason for pass request
- Name, contact and time of appointment

Early Leaver Pass will be either provided immediately or made available for pick up at Recess at the Attendance Office.

Request for an Early Leaver Pass after :Recess. Parent/Guardian is to report to the Front Office and complete a Request for Early Leaver Pass form.

Once the form is completed and approved, the student will be called to the front office at the earliest convenience.

## Medication & First Aid

When a medical practitioner has prescribed medication that must be administered during the school day, parents/carers must:

- notify the school
- provide up to date information as required
- supply the medication and any 'consumables' necessary for its administration in a timely way.

Parents/carers of children who require prescribed medication to be administered at school must

complete a written request form from the Front Office. Students must not carry medications unless there is a written agreement between the school and the student's parents/carers.

An Individual health plan is required for any student:

- diagnosed with severe asthma, type 1 diabetes, epilepsy or anaphylaxis
- diagnosed as being at risk of an emergency
- who requires the administration of health care procedures.

Should your child fall sick or require First Aid while at school, they should present to the Front Office. One of the trained staff will assess and provide treatment where possible. If necessary Parents/Carers will be notified and/or additional medical support.

## What if I feel sick at school?

Ask your teacher for a note to go to the front office. You may be supervised for a short time, but if your parents are at home, they will generally be asked to come and collect you from school. First aid support at the school is limited.

We do not dispense paracetamol tablets. Parents who require their child to receive prescribed medication during the day should provide the relevant details to the clerical office.

## What if I am absent from school?

Students who have been absent from school will need to have their absence explained. This can be done in the following ways:

1. A written note from their parents/guardians, which can be returned to the office, or
2. Use the Kurri Kurri HS app for smartphones, which will send the response to the school and a confirmation to the parent/guardians email address.

Notes should be presented within five school days or the absence is recorded as being unexplained.

Have your parent/caregiver write a note that gives the following information:

- Student name & Year
- Address & date
- The date of absence
- Reason for absence
- Parent/carer name

# Timetables and Belltimes

At Kurri Kurri High School, our timetable operates on a ten-day cycle made up of Week A and Week B.

Each day is made up of 3 periods. Initially, you will be given a paper copy of your timetable and you will be shown how to read this timetable as well as how it can be accessed on line via the Student Portal.

Lessons start at 8.30am and finish at 2.30pm every day.

There are two 30 minute breaks during the day, we call them Lunch 1 and Lunch 2.

A bell will sound to signal the start of the day, change of period, the start and end of lunch and the end of the day. Prior to the bell a song will play to indicate it's time to move to class/go to the bathroom/fill drink bottles to ensure students are maximising their learning time.



## Kurri Kurri High School Bell Times 2022

Monday, Tuesday, Friday		Wednesday and Thursday	
<b>Period 1</b>	8.30am to 10.10am	<b>Period 1</b>	8.30am to 10.10am
<b>Recess</b>	10.10am to 10.40am	<b>Recess</b>	10.10am to 10.40am
<b>Period 2</b>	10.40am to 12.20pm	<b>Period 2</b>	10.40am to 12.20pm
<b>Lunch</b>	12.20pm to 12.50pm	<b>Lunch</b>	12.20pm to 12.50pm
<b>Period 3</b>	12.50pm to 2.30pm	<b>Period 3</b>	12.50pm to 2.30pm *
* Wednesday Years 9&10 Sport		<b>Scripture</b>	2.30pm to 3pm

## Stationary and equipment required for Year 7

### ITEMS NEEDED FOR SCHOOL FOR SCHOOL EVERYDAY

Laptop and compatible headphones	1 x soft eraser
1 x pencil case	1 x scissors
2 x blue or black pens	1 x glue stick
1 x red pen	2 x whiteboard markers
2 x HB pencils	1 x 30cm ruler
Highlighters	1 x document wallet
1 x pencil sharpener	4 x A4 Exercise books
Casio Scientific Calculator - available from Front Office	Appropriate joggers & water bottle for Lifestyle Prac Lessons

### School Contribution

Parents and carers are asked to pay a small general contribution to support the programs offered at Kurri Kurri High School. The general contribution funds are used to purchase resources, offset the cost of printing and library resources.

These fees can be paid in person at the front office or online via the payments section on our website. Eftpos is available.



Year 7 Subject	Subject Contribution
<b>CORE</b>	\$50
<b>LIFESTYLE</b>	\$15
<b>LOTE</b>	\$5
<b>VISUAL ARTS</b>	\$20
<b>EXHIBITION REQUIREMENTS</b>	Nil
<b>GENERAL CONTRIBUTION</b>	\$80
	<b>TOTAL FEES</b> \$170
<b>YEAR 7 CAMP</b>	Approx. cost \$350

# BYOD

BYOD is a school policy that enhances digital capacity in students to ready them for the future workplace. Students bring a device to facilitate deeper, more personalised and student-centred learning.

Students have the opportunity to bring a device to assist with their learning (eg. netbook or laptop with a minimum screen size of 9"). The device will be attached to the DoE wireless network (which operates on 802.11abgn/ac 2.4 & 5 GHz frequencies) and the school will provide the same filtered internet access used on all school owned technology.

It is essential to understand that Kurri Kurri High School takes no responsibility for the device and minimal ongoing technical support will be available. It is very important that parents and students familiarise themselves with the **DoE BYOD Policy\***. Unfortunately damage to, or loss of BYOD technology is not covered under DoE Treasury Managed Fund insurance policies. When purchasing devices parents may also have the option to purchase an insurance policy from the supplier or relevant insurance company.

Students and parents must sign and return a BYOD Student Agreement before students start using their devices at school. Staff will have access to lists of students participating in BYOD programs through the school's Sentral administration system.

All students at KKHS have the opportunity to participate in our Bring Your Own Device (BYOD) program. Our BYOD structure includes 2 tiers to ensure all students have access to technology to assist with their learning:-

- Tier 1 - Outright Purchase - students purchase and bring their own laptop to school to assist with learning.
- Tier 2 - Loan devices - students collect, use and return school owned Chromebooks from trollies within classrooms. Limited numbers of devices are available.

## Device purchasing

To simplify purchasing for parents we have partnered with 2 resellers, LWT and JB HiFi to provide purchase options for student laptops. We have recommended Laptops and Chromebooks that are compatible, affordable, durable and compact. Purchases can be picked up in store or shipped directly to your home address. For Online Ordering please refer to the links provided in the BYOD section of the school website.

## Tablets

KKHS does not recommend parents purchase tablet devices (iPads, Android tablets) for BYOD. In the case where a student has an existing tablet that could be used for BYOD, we encourage parents and students to discuss this option with our HT Technology & BYOD.

## Mobile phones/Smartphones

KKHS does not endorse the use of mobile phones or smartphone technology as the primary device in our BYOD program. Students will at times harness the power of smartphones in class, however, learning for long periods using this type of technology is not sustainable due to the reduced screen size.

\* <https://education.nsw.gov.au/policy-library/policies/student-bring-your-own-device-policy-byod>



# BYOD

## Existing devices

The use of existing devices is whole-heartedly encouraged. If students have an existing laptop that they would like to use for our BYOD program, please ensure the laptop meets the following requirements:-

## Laptops

Minimum screen size of 11"

Wireless 802.11abgn/ac 2.4 or 5GHz

Minimum 4GB RAM

Minimum 64GB Hard Disk

Minimum 6 hour battery life

Active virus protection

Chrome browser installed

Sturdy protective case

## Chromebooks

Chromebooks are a great alternative to laptops. Software applications are not installed on Chromebooks. Students create and store all work online using free cloud storage in Office365 or G Suite provided by DoE.

Minimum screen size of 11"

Wireless 802.11abgn/ac 2.4 or 5 GHz

Minimum 2GB RAM

Minimum 16GB Hard Disk

Minimum 6 hour battery life

Sturdy protective case

## Protective case

A protective case is essential for all student devices. Our school recommends cases with hard protective sides to guard against damage.



## Need more help?

For further information, please contact Mr Jeremy Rennex (Head Teacher Technology & BYOD) - via the school switch or email [jeremy.rennex@det.nsw.edu.au](mailto:jeremy.rennex@det.nsw.edu.au)

# Mobile Phone Policy

## At Kurri Kurri High School we have Phone NO or Phone GO

Phone GO means students can have their phone out for subject purposes only. If a phone is used incorrectly in a Phone GO period students will be asked to put it in a phone safe.

If a teacher has displayed the Phone NO sign then phones and headphones must be away and out of sight.

If a teacher sees a student with their phone during Phone NO lesson, they will be given one warning. If the teacher sees the phone again the student will be expected to put it in the phone safe. If the students doesn't put it in the phone safe they will be referred to the Head Teacher.



### Phone NO

1. If your teacher sees you with your phone (or headphones) during a Phone NO lesson, you will be given one warning
2. If your teacher sees you phone again you will be expected to put it in the phone safe
3. If you don't put your phone in the phone safe you will be referred to the head teacher

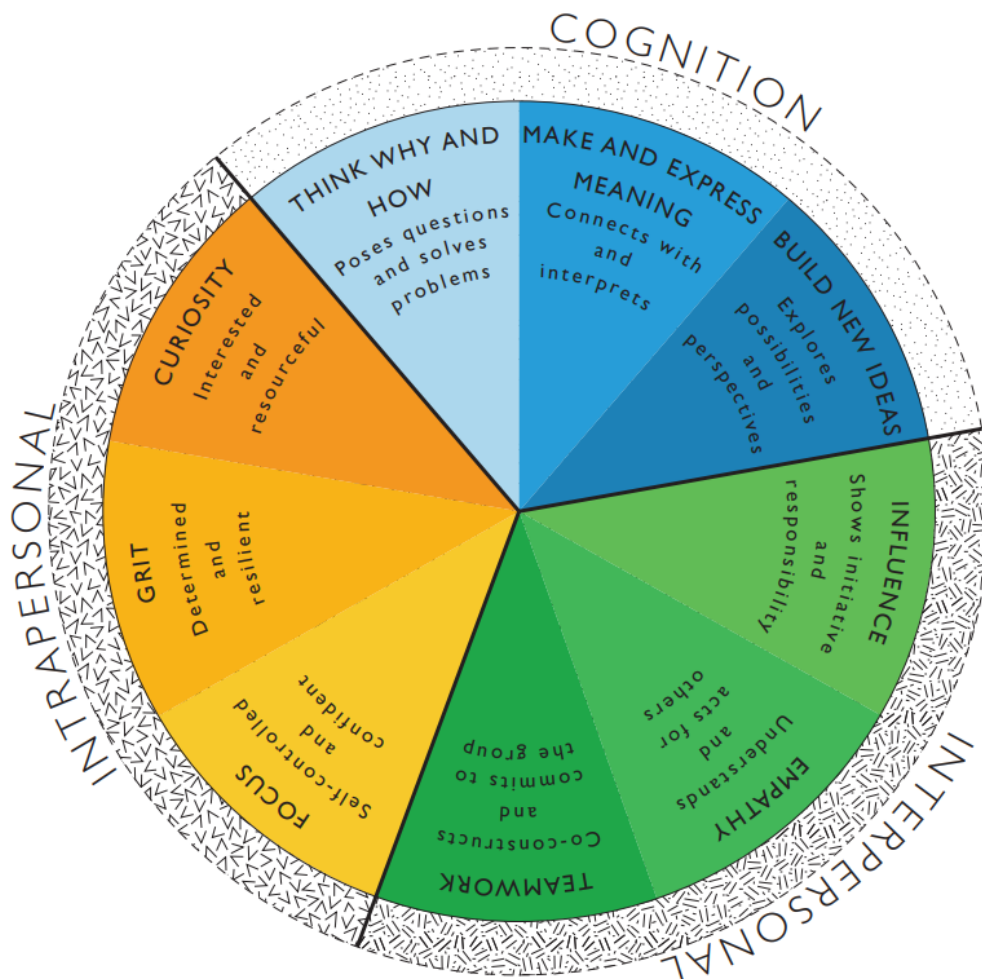


### Phone GO

1. Phone out for teacher specified tasks only
2. If you don't follow the teachers instructions you will be asked to put your phone in the phone safe

## Learning Disposition Wheel

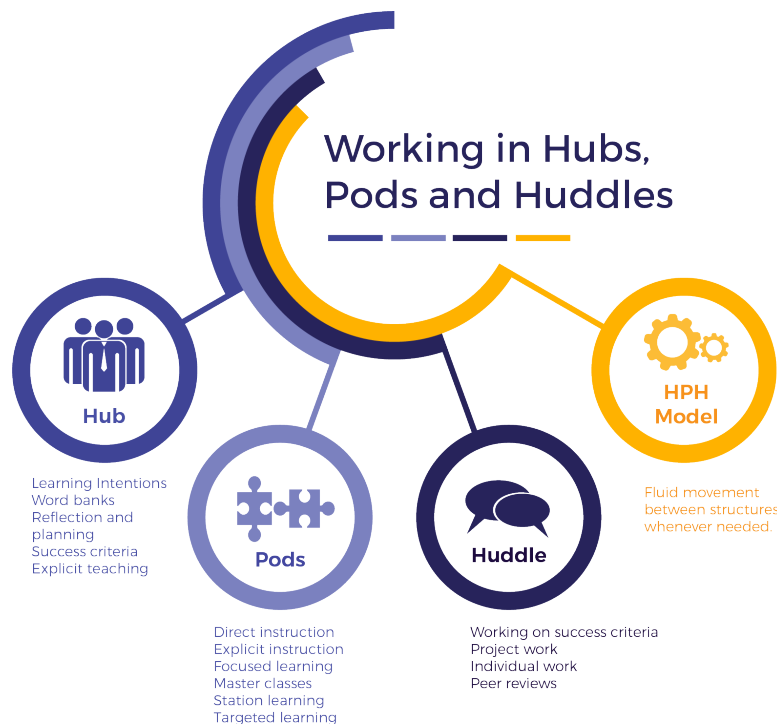
This is the Learning Disposition Wheel. Increasingly this wheel is helping learners across the school to understand themselves better.



# HUB Learning

## What Are HUBs?

Kurri Kurri High School's Learning HUBs are a new, exciting and innovative approach to secondary education. In Stage 4, students work in classes, known as HUBs, which have up to sixty students and two specialist teachers to engage in all core subjects. Working in HUBs, PODs and HUDDLES, students engage in their learning through integrated REAL projects to ensure learning is rigorous, engaging and authentic. These projects are expertly planned to incorporate all syllabus requirements from English, HSIE, Science, Mathematics and Mandatory Technology. HUB learning places an emphasis on teacher and student collaboration while encouraging critical thinking skills to apply key learning knowledge and skills to real world problems. Working in award winning learning spaces, teachers utilise an innovative way of teaching working collaboratively to co-plan, co-teach and co-assess students in an exciting and engaging curriculum model with strong foundations in literacy and numeracy. HUB Learning is a unique way for students to begin their high school adventure and will develop their key skills to ensure their own academic excellence.



## Sport in Year 7

Year 7 & 8 (Stage 4) students are involved in our Integrated Sports program, meaning their sport periods are included in their Lifestyle lessons and run by our specialist PDHPE teachers. Students participate in a variety of movement contexts with a focus on developing their fundamental movement skills as well as further developing their social attributes such as cooperation, communication and teamwork which are directly related to team games.

## Blue Hub Applications

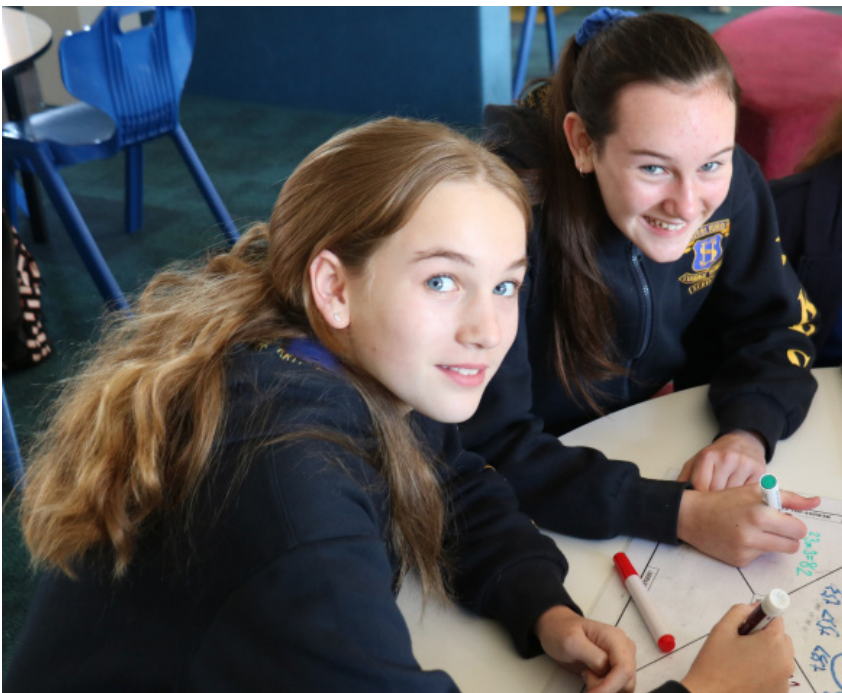
The Blue Enrichment Hub is an opportunity for students to work collaboratively and extend their academic potential. Blue Hub students will work with their teachers to complete similar Rigorous, Engaging, Authentic Learning projects as their peers. However, students in Blue Hub focus on working collaboratively and creatively to make connections in their learning and apply their newly acquired knowledge and skills to real world problem solving. Students will be working with curriculum experts throughout the school to extend their knowledge in key learning areas such as English, HSIE, Science and Mathematics. Students will use these skills to explore key concepts and knowledge in more depth to evaluate and manipulate their learning. Students are identified through a rigorous selection process in Year 6 in line with the High Potential and Gifted Education policy and will be required to present samples of work which demonstrate their academic abilities and their commitment and motivation to learning.

Students are encouraged to approach the Blue Hub learning experience in a mature and independent way, working collaboratively with their peers and alongside their teachers to extend and achieve to their academic potential, and strive for personal excellence. They need to commit to bringing a learning device every day.

To apply:

1. Complete an application
2. Ask your child's Year 6 teacher to submit a recommendation
3. Attend an interview (Monday 6 - Tuesday 7 Sept)
4. Bring work samples and your child's Semester 1 report and Year 5 NAPLAN results to the interview
5. From Monday, 11th October successful Blue Hub Applicants notified by mail

Application forms will be available from **Friday, 11th June** and can be found on the Transition page of the Kurri Kurri High School website: <https://kurrikurri-h.schools.nsw.gov.au>



**Applications  
will be  
accepted  
from Friday,  
11th June to  
Monday  
30th August.**

## Kuta-Kaya



Our



Kuta-kaya Faculty is a supportive environment for students with diagnosed disabilities to provide individualised learning experiences. 'Kuta-kaya' means to 'think strong, able and powerful'. Our classes are named in local Wonnarua language and represent different native Australian animals.

Collaboration is a central focus for Kuta-kaya and families are encouraged to be active contributors to the development and assessment of student Learning Plans and Personal Interest Projects. Students are supported by specialist teachers and School Learning Support Officers (SLSOs) to integrate learning from all subjects, connecting learning to student passions. Kuta-kaya aims to provide a safe, caring and positive learning environment for all by developing authentic experiences for students to develop their social, emotional, communication and academic goals towards greater independence.

Our faculty caters for students from Year 7 to Year 12 who access a range of learning pathways. Some students are learning using Life Skills outcomes and some are using mainstream outcomes. We also have opportunities for students to explore their passions and develop a range of skills through Big Picture projects. Many of our senior students in year 10, 11 and 12 are working towards transitioning out of school into further study, employment or post-school options.

### - Pintu (Kangaroo), Kawul (Eagle) and Marin (Emu)

Students in Stage 4 and 5 working towards Life Skills outcomes. Students in Pintu, Kawul and Marin are at the beginning of their Big Picture journey and are exploring pathways of learning within the school whilst thinking about pathways for after school. Students in Stage 5 access a range of electives to support their interests and skill development.

### - Kirawa (Lizard)

Students in Stage 4 and 5 working towards mainstream syllabus outcomes. Students in Kirawa are diving deep in to the Big Picture Design for Learning and are encouraged to develop independence and ownership over their own learning. Students in Stage 5 access electives to support their interests and skill development. Students in Kirawa are active community citizens who seek opportunities to be engaged and contribute to society.

### - Warikal (Dingo)

Students in Stage 5 and 6 working towards Life Skills outcomes with the aim of transitioning from school into employment, further study, or other post-school occupation. Many students access electives, TAFE courses and School to Work programs to support their learning. Warikal use Big Picture Design for Learning to individualise their own learning programs to maximise their opportunities for when they leave school.

### - Wuwing (Magpie)

Students in Stage 4, 5 and 6 working towards Life Skills outcomes to support living skills. Wuwing use some elements of Big Picture Design for Learning in their studies. Students in Stage 5 and 6 access electives to support their interests. Wuwing students contribute to the school community by leading a recycling program across the school.

# EXCELLENCE RESPECT SAFETY

## Aboriginal Education

Kurri Kurri High School is proud to have a rich and inclusive culture for our Aboriginal and Non Aboriginal students. Our school has a range of opportunities to support our students social, sporting, cultural, academic and leadership goals. Our Junior Aboriginal Educational Consultative Group (JAECG) enables our students to have a voice within our school. Our JAECG meet at least twice a term to organise activities and events and show their commitment by volunteering their time to fundraise and run school activities. The JAECG provides leadership opportunities as well as opportunities to represent our school participating in community and interschool events. The JAECG are regularly invited to deliver Welcome to Country or Acknowledgment of Country.



Some of the programs we offer to all Aboriginal and Torres Strait Islander students are:

- Deadly Cooking - a hands-on cooking program that allows for new food skills and healthy eating ideas to be learnt in a fun and friendly environment.
- Young Mob Leadership Program - enabling urban Indigenous youth to gain skills in public speaking and leadership to improve confidence and self-esteem. It also offers opportunities for students to learn more about their Indigenous culture, reinforcing their Aboriginal identity.
- SistaSpeak - a girls mentoring group where students learn how to weave, cook and understand about country and why it is so important.
- I Believe Newcastle University Program - this program aims to plant the seed of ambition for students to begin thinking of their future in a culturally safe space through talking circles, interactive activities and traditional Indigenous games.

Within our classrooms we also hold Aboriginal Language, Art and Dance Workshops throughout the year and celebrate Mabo Day, Close the Gap, Harmony Day events and NAIDOC Week.

## Learning Support

The Learning and Support Team works closely with teachers, students, parents and outsourced professionals to meet the individual learning support needs of our students.

All students in Year 7 will participate in Best Start assessment during Term 1.

### Learning and support services:

- Assess students learning needs
- Development of individual learning plans
- In-class support
- Transition
- Targeted intervention programs

# School Values

## What is Wellbeing and Engagement at KKHS and what programs of student support are offered?

Wellbeing and Engagement at KKHS means that ALL students are Known valued and cared for. A focus on wellbeing goes beyond just welfare needs of a few individual students, at KKHS we aim for all students to be healthy, happy, successful and productive individuals who are active and positive contributors to the school and society in which they live.

We have a diverse range of wellbeing programs and strategies utilised by all staff so wellbeing is at the forefront of everything we do at KKHS.

In classrooms staff utilises a range of strategies to promote wellbeing such as meeting and greeting all students and utilising positive language and interactions all intended to promote self regulation and raising responsibility in all Students. At Kurri High we value Excellence, Safety and Respect and all students from year 7-10 have access to Advisory periods with their year advisors to develop pro social and academic behaviours.

Across the year there are various whole school initiatives that aim to promote positive relationships and the five areas of wellbeing including our cognitive, emotional, social, physical and spiritual wellbeing.

These include:

- Bullying, No Way! Day

- Harmony Day

- NAIDOC Week

- Youth Week

- Wear it purple Day

- R U OK? Day

- White Ribbon Day

- KKHS Annual Fun Run

- KKHS Positive Recognition Program and Awards assemblies held each term

There are also a variety of targeted programs that we offer to support students who need extra support both in year group sessions or smaller group sessions, including:

- Rage Program (Anger management)

- Seasons for growth (grief and loss program)

- Youth Mental Health Awareness program

- Pit Stop program

- Smart Choices

- Love Bites Program

- Shine Girls- promoting prosocial behaviour in girls.

- Rainbow Alliance- LGBTQIA empowerment group

Our Wellbeing Team also work to establish and maintain partnerships with local support services including Headspace, Kurri Kurri Community Centre, Youth off the Streets and Cessnock PCYC who often run programs with in the school and in the wider community for students and families to access.

# School Values

## Who are the Wellbeing & Engagement Team?

The Wellbeing and Engagement Team include:

Deputy Principal:	Mr Alan Hope
HT Engagement:	Ms Sara Da Silva
Year Advisors for 2022:	Mr Peter Asvestas & Mr Scott Berry
Student Support Officer:	Megan Gillespie
District School Counsellors:	Connie Spinks and Claire Ingrid

## Five Ways to Wellbeing



## Behaviour Expectations

At Kurri Kurri High School we use the Raise Responsibility System (RRS) as the foundation of our Discipline system. The RRS is a proactive approach to behaviour management as it recognises misbehaviour as an opportunity to learn and teach prosocial behaviours. The focus of language within our school is "above the line" behaviours to promote and foster internal motivation. This means students learn how to be responsible for themselves and accountable for their actions with a coaching focus, rather than relying on punishment and reward systems (external motivators), which have been well researched as ineffective in supporting behaviour change.





# School Values

## Attendance expectations

Attendance Matters: Did you know?

Parents or carers of children of compulsory school age are responsible for ensuring their child attends school every day. Children must commence school by age 6 and then complete year 10. After Year 10 and until they turn 17, students must be:

- in school or registered for home schooling or
- in approved education or training (e.g. TAFE, traineeship, apprenticeship) or
- in full-time, paid employment (average 25 hours/week) or
- in a combination of work, education and/or training.

It is important to tell the school if your child has to be absent from school and to provide a reason for the absence.

Principals are legally responsible for keeping accurate records of student attendance. Principals are also responsible for deciding if the reason given for an absence is justified. Wherever possible, parents and carers are encouraged to provide an explanation for absences before the absences occur. This can be done in one of the following ways:

- 1- Phone call or email to the school attendance office stating that your child is absent and a reason why.
- 2- Replying to the automated Text message sent to parents/carers if a student is absent giving a reason in the Text.
- 3- Sending a written with your child with a reason of absence for the days missed and any medical certificates they may have.

## Absentee Notices

If the school has not received an explanation for a child's absence they may send you an Absentee Notice. Principals use the Absentee Notice to contact parents within two days of an unexplained absence. The Absentee Notice must be completed in English and returned to the school within seven school days, giving a reason for the absence.

NSW Department of Education

## Why attendance matters

When your child misses school they miss important opportunities to...



Learn



Build friendships



Develop life skills

[education.nsw.gov.au](http://education.nsw.gov.au)



EXCELLENCE RESPECT SAFETY

## School Counsellors

All new students to our school will have a standard meeting with one of our counsellors at the time of enrolment.

Currently at KKHS we have two counsellors:

- Connie Spinks      MONDAY, TUESDAY & FRIDAY
- Claire Ingrid      WEDNESDAY & THURSDAY

Once started at KKHS, in order to see one of our counsellors, students require a referral, referrals can come from the following ways:

- Students may self-refer, counselling needs are assessed and referrals made if necessary. Referral forms are available from outside the Counsellors office.
- Teachers or non-teaching staff; or
- Referral by the Wellbeing Team

Please be aware that counsellors are mandatory reporters, confidentiality will be respected but is not absolute. Where there is a risk of harm the matter will be reported in the best interests of keeping children safe.

## Circle Classes



The Circle aims to support our community, by providing quality experiences and strategies that enhance all learners in their goals towards personal excellence. The Circle will work in collaboration with our community of learners to bring engagement and wellbeing to the forefront of our work; creating futures at Kurri Kurri High School.

The Circle is a proactive intervention and resource that can be accessed by staff and students. It is underpinned by high expectations and the Learning Disposition Wheel.

The Circle aims to;

- Support staff to build relationships with students and community.
- Facilitate student intervention to develop personal and social capabilities.
- Create a safe space for students to go where they can learn to control their own behaviour and become responsible for their own learning.
- Coach students with learner expectations in a cooperative environment and with support when returning to class.

## School Life

Becoming involved with activities and events as part of your time at school can help to expand on learning, develop skills and build confidence.

Just some of the things available to you include:

### Excursions & Incursions

Throughout your time at Kurri Kurri High School your teachers will arrange experiences to add to your learning and/or develop the friendships and connection within your Year group.

Excursions planned so far for 2022 include:

- Boot Camp
- Project launches
- Hunter Valley Zoo
- Year 7 Camp
- Year 7 Sports Gala Days
- Luna Park
- Sydney Musical Performance
- Sydney Art Workshop
- Overnight CAPA Workshops in Sydney

### Develop your leadership skills

Our Student Representative Council (SRC) is the voice of students at our school.

There are representatives from each year group.

As a part of the SRC you will assist in leading school assemblies, have the opportunity to work on projects to benefit our school and the broader community as well as plan and coordinate fund-raising activities.

To become a part of the SRC, interested students will be called on to nominate themselves and then be voted in by their peers.

### Interact

Interact is a Rotary Club for school students aged 12-18, teaching students leadership skills while discovering the power of service. At Kurri Kurri High School, the Interact Club meets during Check-In time. Students raise funds and complete various projects within the school and the community. All students are welcome to sign up.

Projects at school have included: Free Fruit Wednesday, Toastie Tuesday, FriYay Sausage Sizzle, Ronald McDonald House Toy Drive.

Work with Kurri Rotary has included-Build for A Cure, Nostalgia Festival, Kurri Community Festival and Kurri Kurri Carols by Candlelight.

### Opportunities to Perform @ KKHS

There are many extra-curricular opportunities available to develop your performance skills. These include weekly clubs:

- Vocal Ensemble
- Dance Ensemble
- Drama Club
- Musical Theatre Club
- Rock Band
- Guitar Ensemble
- Art Studio

You can also have the chance to perform at events like:

- Starstruck
- Showcase
- Nostalgia Festival
- KKHS Tropfest

## School Life - Representative Sport

Kurri Kurri High School endeavours to create a wide range of sporting opportunities for its students. It aims to promote a healthy lifestyle and the benefits associated with participating in a variety of sporting situations. It is the school's goal to continually assess the range of sporting options available to our students and pursue a broader range of activities, which cater for the interests of the Kurri Kurri community and allow students the opportunity to achieve.

### Sports Carnivals

All students are expected to attend and participate in annual Swimming and Athletics carnivals. You are encouraged to wear Sports House colours for these events.

Students are grouped into Houses on surnames of the students.

If your surname falls between:

**A-D** You are in **Allunga House** and should be dressed in Red

**E-K** You are in **Kyeema House** and should be dressed in Green

**L-R** You are in **Lutana House** and should be dressed in White

**S-Z** You are in **Neewarra House** and should be dressed in Blue.

Talented athletes at Kurri Kurri High School are able to proceed to Zone, Hunter Regional, State and National levels through our participation in the Hunter School Sport (HSSA), NSW Combined High Schools Sport (CHS), NSW All Schools and, at national level, the Pacific School Games.

### Commitment to Sport

Kurri Kurri High School is committed to the following sports:

- Swimming
- Athletics
- Cross Country
- Netball
- Basketball
- Touch Football
- Soccer
- Futsal
- Rugby League

Other sports that may be entered as individual include- Golf, Gymnastics, Lawn bowls.

Please note that the sports offered may differ each year based on student interest and coach availability.

For representative teams other than those mentioned above, students nominate to join training squads and are then chosen for teams according to criteria set down by the coach of that team.



# 360 Student Conferencing

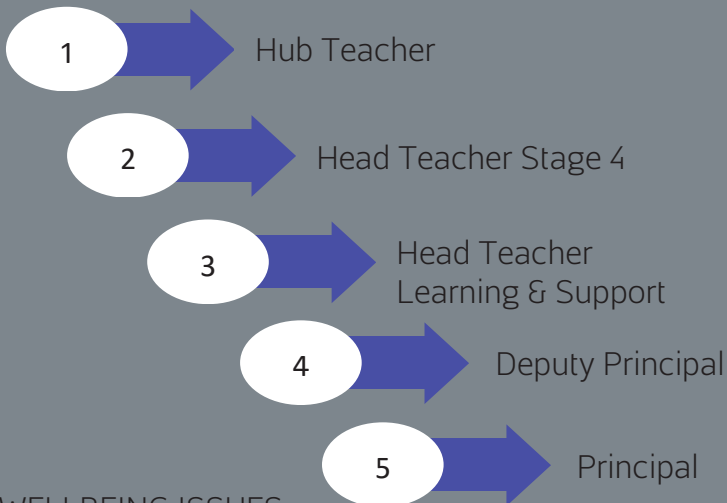


Student led 360 Conferences are a unique way for students to communicate their progress and achievement with parents by putting students' front and centre. These 360 Conferences replace the traditional parent teacher interviews, create an opportunity for students to authentically engage with their parent/carer and a teacher utilising work samples and assessment tasks, while reflecting upon their progress in these areas. Students will discuss their skill development, commitment to learning, goals they have set for the semester, areas of strength and areas for improvement. Students then discuss within the 360 Conference possible goals for the next semester to ensure they are working toward achieving their personal academic excellence, thus making the process a genuine, honest student led reflection.

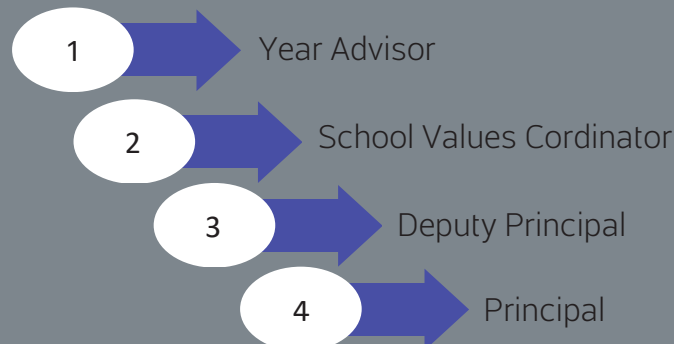
## Who to contact when

Please follow these pathways to assist you with making the right point of contact:

### LEARNING ISSUES



### WELLBEING ISSUES



## Special Religious Education

Christian Special Religious Education (SRE) engages students in conversations as they question life, explore values and discover faith. At Kurri Kurri High School, this is an optional program delivered to students who nominate to participate for an hour each week. It is facilitated by volunteers from the Anglican Diocese of Newcastle and are a Department of Education approved SRE provider.

There is a Special Religious Education participation letter as part of your enrolment pack. If you change your mind regarding participation after enrolment, simply notify the school in writing.

## Healthy School Canteen

We are proud to provide a Healthy Choice Canteen having been officially audited by Menu Check. The canteen is open school days 8am - 1.30pm. Current menu can be found on the school website.

### KKHS CANTEEN MENU/ PRICE LIST- 2021

#### New Canteen operating hours 8.00am to 1.30pm

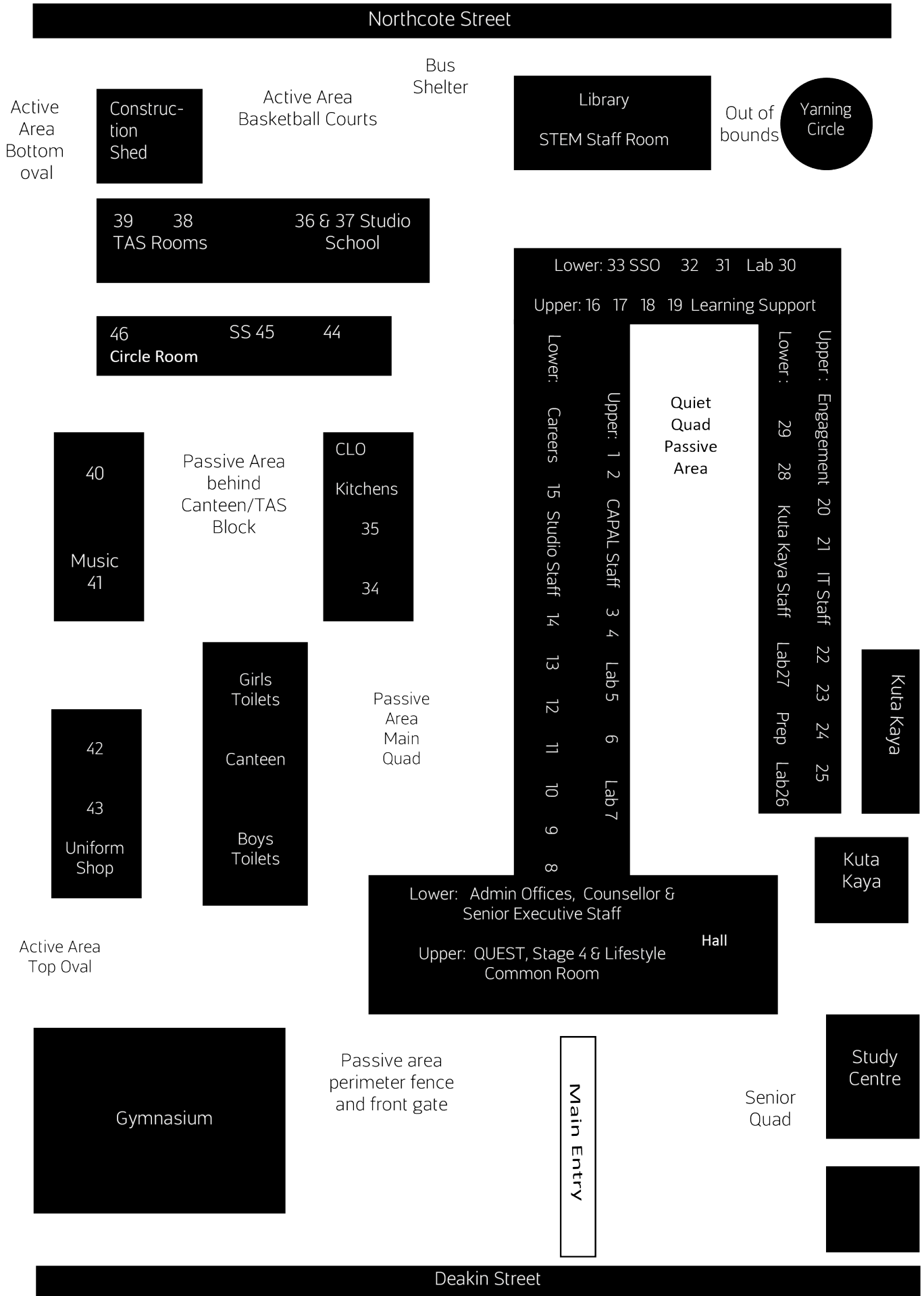
Every Day Items		Occasional Items	
Salad Roll	\$3.50	<b>Lunch - Monday to Thursday</b>	
Chicken lettuce & mayo roll	\$3.50	Low fat pie	\$3.00
Egg and lettuce roll	\$3.50	Low fat sausage roll - 120gm	\$3.00
Ham roll	\$3.50	Plain chicken burger	\$3.50
Large salad tub+ cheese	\$6.00	Chicken chilli wrap	\$3.50
Small salad tub+ cheese	\$3.50	Plain beef burger	\$3.50
Salad Specials - from	\$3.50	Twisted Yogurt	\$2.00
Small salad wrap+ cheese	\$3.50	Low fat Muffin	\$2.00
Large salad wrap+ cheese	\$6.00		
Large salad wrap + meat	\$6.50		
Small salad wrap + meat	\$3.50		
Small rice tub	\$3.00		
Small pasta tub	\$3.00	<b>Friday - Lunch 1</b>	
Fresh fruit tub	\$2.50	Friday "Pie Day"	
Low fat yoghurt	\$3.50	Various flavoured pies	\$3.50
Cheese & crackers or Vegie sticks	\$2.50	Spinach & Feta Roll -120gm	\$3.00
Snap Stix	\$1.00	Quiche 120grms	\$3.00
Cheese sandwich	\$2.00		
Cheese & vegemite sandwich	\$2.00	<b>Drinks</b>	
Cheese & tomato sandwich	\$2.50	Powerade zero	\$3.50
Salad sandwich	\$3.50	Coke no sugar	\$2.50
Meat & salad sandwich	\$4.50	Chilled Ice Tea	\$3.00
Beef burger plain	\$3.00		
Beef burger with salad	\$4.50		
Ham & Cheese	\$2.00	<b>Specials of the Day</b>	
Vegemite Scroll	\$2.00	Specials vary and will be determined by popularity, the weather and available fresh produce in season. <b>Check what's cooking!</b>	
		Vegetarian, Vegan and Gluten free options are always available.	
<b>Drinks</b>			
Water 600ml	\$2.00		
Pump water 750ml	\$3.00		
Juice cup - 2 flavours	\$1.00		
Up n' go - 2 flavours	\$2.00		
Milk-500ml	\$3.50	<b>Available Everyday</b>	<b>To be ordered</b>
Plain milk	\$1.50	Wraps, rolls and sandwiches from the everyday menu are to be	
Small juice - 3 flavours	\$2.50	ordered.	
Small flavoured milk	\$2.00		
Glee Fruit drink - 2 flavours	\$2.00		

## Keeping in Touch

Keep in touch with what is going on at our school via:

- **School Website** Keeps you up-to-date on school news stories, make payments, copies of the school newsletter, photo galleries as well as a comprehensive information on all facets of our school.  
<https://kurrikurri-h.schools.nsw.gov.au>
- **Facebook & Instagram** Like our Facebook and Instagram pages where we post regular announcements to keep you up to speed on what is happening in the school on a day to day basis.
- **Email** Much of our information home is sent via email, please be sure to keep your email up-to-date.
- **School Newsletter** Produced once a term and delivered electronically. Be sure to include your email on the enrolment form to receive a copy.
- **Sentral Parent Portal** Sentral Parent Portal is a secure online platform that provides parents with access to student timetables, School Reports and daily notices from teachers to students.
- **Stay up-to-date** Be sure to let us know if any of your contact details change. Having the correct address, home and email addresses ensures we can get information out to you easily.  
Email: [kurrikurri-h.school@det.nsw.edu.au](mailto:kurrikurri-h.school@det.nsw.edu.au) or phone 4937 1877
- **P&C** The P&C is an excellent place to have a voice in our school. Meetings are held on the twice a term. Please refer to the website for dates and times.

# School Map





Notes

---

---

---

---

---

---

---

---

---

---

---

---

---

---

---

---

---

---

---

---

---

---

---



**KKHS**